

Peek/400

Version 4.0.7

User's Manual



Produced by: Thomas Raddatz
e-mail: thomas.raddatz@tools400.de
Homepage: <http://www.tools400.de>
Release: 05.10.2024
© 1997-2024 Thomas Raddatz

Summary

1	<i>Peek/400, Why?</i>	6
2	Features And Restrictions	7
3	Download	9
4	License	10
4.1	Registration	10
4.2	Guarantee	10
5	New Features Of Version 4.0.7	11
6	Installation	12
6.1	Overview	12
6.2	Update Of A New Version	13
6.3	Roadmap.....	13
6.3.1	<i>Preparing The Installation:</i>	13
6.3.2	<i>Finishing the Installation:</i>	14
6.4	Change Command Language.....	14
7	Quick Start	15
8	Main Screen Of <i>Peek/400</i>	17
9	Functions Reference	19
9.1	What You Should Know	19
9.2	Subfile Options	19
9.2.1	<i>Pin-Record</i>	19
9.2.2	<i>UnPin-Records</i>	20
9.2.3	<i>Change Record</i>	20
9.2.4	<i>Copy Record</i>	20
9.2.5	<i>Delete Record</i>	21
9.2.6	<i>Display Record</i>	21
9.2.7	<i>Copy Record Extern</i>	21
9.2.8	<i>Move Screen To The Left By One Field</i>	23
9.2.9	<i>Move Screen To The Right By One Field</i>	23
9.2.10	<i>Activation Of The SPLASH-Screen</i>	23
9.2.11	<i>Deactivation Of The SPLASH-Screen</i>	24
9.2.12	<i>Move Record to Top</i>	24
9.2.13	<i>Rebuild Program</i>	24
9.2.14	<i>Move Screen To The Next Marked Column</i>	24
9.2.15	<i>Move Screen To The Previous Marked Column</i>	25
9.2.16	<i>Select records access by key sequence</i>	25
9.2.17	<i>Select records access by record number sequence</i>	26
9.2.18	<i>„About“</i>	26

9.2.19	Hex Display Mode	26
9.2.20	Normal Display Mode	27
9.2.21	Colours	27
9.2.22	Save Environment	29
9.2.23	Load Environment	30
9.2.24	Delete Environment	31
9.3	Function Keys	31
9.3.1	SQL-SELECTION	31
9.3.2	Pin-Column	32
9.3.3	UnPin-Column	33
9.3.4	Exit	33
9.3.5	Prompt	33
9.3.6	Refresh	33
9.3.7	Insert Record	34
9.3.8	Toggle Headline	34
9.3.9	Mark Column	34
9.3.10	Release Mark Column	34
9.3.11	Display Database Relations	35
9.3.12	Position Cursor	36
9.3.13	Change Layout	36
9.3.14	Repeat Option	38
9.3.15	Enable Multi Colour Lines	38
9.3.16	Disable Multi Colour Lines	39
9.3.17	Extended column pin function	39
9.3.18	Search Engine	39
9.3.19	Top Of File	42
9.3.20	End Of File	42
9.3.21	Move Screen To The Left	42
9.3.22	Move Screen To The Right	43
9.3.23	Command Line	43
9.3.24	80/132 Display Mode	43
9.3.25	More Options	43
9.3.26	More Keys	43
9.4	Other Functions	44
9.4.1	Prompt	44
9.4.2	Short Command	44
10	Hex-Editor	46
10.1	Scrolling	47
10.2	Toggle Input Mode	47

10.3	Inserting Text.....	47
10.4	Deleting Text	47
11	Text-Editor	48
11.1	Scrolling.....	48
11.2	Inserting Text.....	49
11.3	Deleting Text	49
12	Keys and Options.....	50
12.1	Introduction.....	50
12.2	Example	50
12.2.1	Redefine of a key mapping.....	50
12.2.2	Redefine a key to an option.....	51
12.2.3	Define two choices for one function.....	51
12.3	Available functions of Peek/400.....	51
12.3.1	Main Program Of Peek/400 , *PEEK05.....	51
12.3.2	Select Record Format, *PEEK12.....	53
12.3.3	Display Record, *PEEK14	53
12.3.4	Search Engine, *PEEK17.....	53
12.3.5	Colour, *PEEK24.....	54
12.3.6	Select Colour, *PEEK25.....	54
12.3.7	Target File, *PEEK26	54
12.3.8	Layout, *PEEK34.....	54
12.3.9	Prompt/Autoprompt: Fieldname, *PEEK37.....	55
12.3.10	Display Database Relations, *PEEK40	55
12.3.11	Hex-Editor, *PEEK45.....	56
12.3.12	Prompt: Select Member, *PEEK47	56
12.3.13	SQL Selection, *PEEK48.....	56
12.3.14	About, *PEEK49	57
12.3.15	Pin-Columns (Dialog), *PEEK50.....	57
12.3.16	Create Program, *PEEK52	57
12.3.17	Select Environment, *PEEK56.....	58
12.3.18	Delete Environment, *PEEK57	58
12.3.19	Message box, *PEEK59.....	58
12.3.20	Text-Editor, *PEEK64	58
12.3.21	Prompt: Select Subfile Option, *PEEK68.....	59
12.3.22	Prompt: Select File, *PEEK69.....	59
12.3.23	Update Programs, *Pxxxxxxxxx.....	60
12.3.24	Peek/400 Control Keys, *PGM.....	61
12.3.24.1	*ACCESSKEY (SET0003)	61
12.3.24.2	*CVTCHR (SET0006)	61

12.3.24.3	*CRTPGM (SET0012).....	61
12.3.24.4	*DSPATR (SET0001).....	62
12.3.24.5	*DFTDSPMDE (SET0011)	62
12.3.24.6	*ENVFILE (SET0015)	63
12.3.24.7	*FLOATKEYS (SET0009)	63
12.3.24.8	*LANGUAGE (SET0004)	63
12.3.24.9	*PROMPT (SET0008)	63
12.3.24.10	*PRVFILE (SET0014)	64
12.3.24.11	*SCROLL (SET0010)	64
12.3.24.12	*SEARCH (SET0002)	64
12.3.24.13	*SECATRDFT (SET0013).....	65
12.3.24.14	*SPLASH (SET0005)	65
12.3.24.15	*VERSION (SET0007)	65
13	Tips & Tricks.....	66
13.1	<i>Peek/400</i> and end-user!?	66
13.2	Create Your Own Default Keyboard Mapping	68
13.3	Your Own Language for <i>Peek/400</i>	68
14	EXIT-Programs	70
14.1	User's Authority (<i>EXIT01</i>)	70
15	Help me!.....	71
16	History.....	72

1 Peek/400, Why?

Peek/400 offers some special features that you will not find within other browsers and it is cheap.

Give it a go if you need one or more of the following features:

- Use Commit and Rollback
- Make use of the dedicated activation group for **Peek/400**
- Have a quick overlook due to the subfile representation of the records
- Use the 80/132-character mode representation
- Make use of the pin-function for columns
(„Pin“ your columns at the left edge of the screen)
- Make use of the pin-function for rows
(„Pin“ your rows at the top of the subfile)
- Use its powerful search engine
- Assign the commands of **Peek/400** to your own keys
- Define your own language, German and English user interface
(Create your own language definition file)
- Have a look at records containing characters below x'40' or equal x'FF'
(But be sure that you will not be able to edit them just with the hex-editor!)
- Hex-Editor for fields
(Edit fields with characters below x'40' or equal x'FF' with the hex-editor!)
- SQL selection and sorting of records by WHERE and ORDER BY
(In addition to the classic access methods: by key and by record sequence)

2 Features And Restrictions

The following field types are supported:

- alpha-numeric fields
- binary fields
- packed fields
- zoned fields
- date fields
- time fields
- timestamp fields

The following field type have not been tested yet:

- DBCS-Either
- DBCS-Only
- DBCS-Open

The following field type are not supported:

- floating-Point
- graphic data without CCSID
- hexadecimal
- unknown fields

If you intend to use all of the features of **Peek/400** you must have a RPG compiler installed on your AS/400. Without the compiler there is no chance for **Peek/400** to generate the programs needed for update, insert and copy operations.

Without the compiler you will not be able to make use of the following features of **Peek/400**:

- insert records
- change records
- copy records within the same file

3 Download

Peek/400 is provided in as a single version that can be run in a CISC or RISC environment running OS/400 V5R2M0 or higher.

If you have a RISC environment **Peek/400** will be converted to RISC by the operating system without any interaction from you.

4 License

4.1 Registration

Dies program is Freeware. There is no registration necessary.

4.2 Guarantee

Although we try to avoid any mistakes within **Peek/400** it is not possible to develop a software without any mistakes. Therefore it may be that there will be an error left within **Peek/400**.

We can not guarantee that **Peek/400** will do its work within any environment and on every AS/400.

Peek/400 is supplied as it is. We assumes no liability for damages, direct or consequential, which may result from use of **Peek/400**

We recommend to test **Peek/400** with uncritical data before accessing critical data!

We appreciate any error reports but we can not guarantee that all errors will be fixed.

5 New Features Of Version 4.0.7

The following new features have been added or changed:



- Fixed PEEK02 to properly return the record format ID.



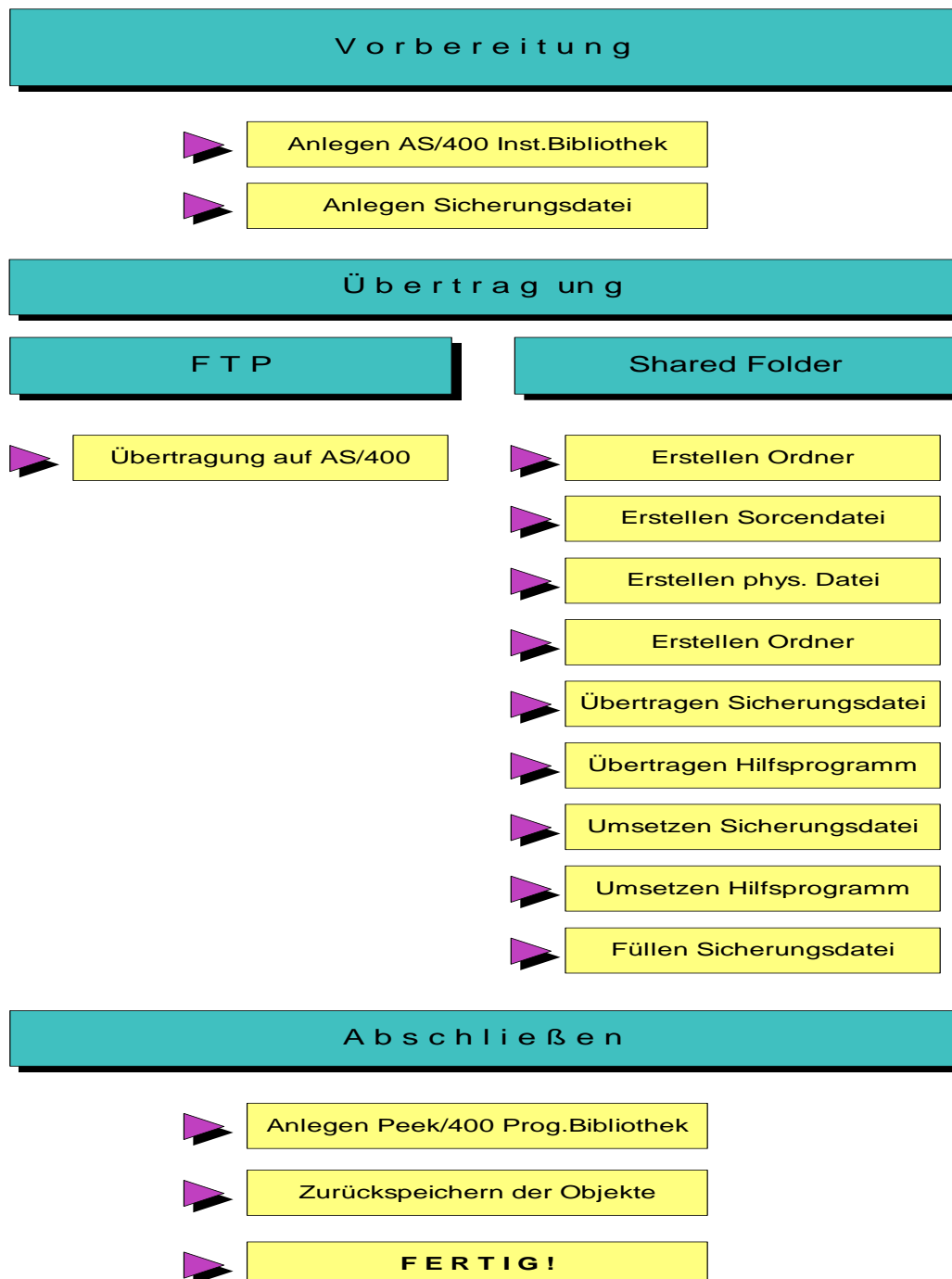
- Fixed PEEK55 to properly load the layout on applying environment settings.



Updating **Peek/400** will automatically add new keyboard settings.
Existing keyboard assoziations will not be changed!

6 Installation

6.1 Overview



(Screen: Installation of *Peek/400*)

6.2 Update Of A New Version

If you are going to restore an update of **Peek/400** we recommend to rename the old program library of **Peek/400** before restoring the new one. This will ensure that all of the update programs will be rebuild by **Peek/400**.



If you did any changes to the configuration files of **Peek/400**, e.g. PEEKSRC or PEEKUSR or EXIT01PF, these changes will be lost, then.
You should verify the new configuration files and add your changes again.

6.3 Roadmap

The installation of **Peek/400** is not very complicated if you just follow the roadmap step by step. It is even much more easier if you have TPC/IP installed on your AS/400.

Follow the roadmap:

6.3.1 Preparing The Installation:

- Create a library **PEEKINST** on your AS/400 system.

CRTLIB LIB(PEEKINST)

- Create a save file **PEEK** placed into the library **PEEKINST**.

CRTSAVF FILE(PEEKINST/PEEK)

- Send the save file from your PC to your AS/400. Replace '###' with the current version number.

binary
put peek###.sav peekinst/peek (sending from the PC to the AS/400)

or

binary
get peek###.sav peekinst/peek (replace (receiving on the AS/400 from the PC)



Be sure to transfer the file having the binary mode enabled!

6.3.2 Finishing the Installation:

- Create a library **PEEK** on your AS/400.

```
CRTLIB          LIB(PEEK)
```

- Restore all objects of **Peek/400**:

```
RSTOBJ          OBJ(*ALL)
                 SAVLIB(PEEK)
                 DEV(*SAVF)
                 OBJTYPE(*ALL)
                 SAVF(PEEKINST/PEEK)
                 OUTPUT(*PRINT)
```

- Ready! Now you can safely delete library **PEEKINST**.
- We recommend to create a copy of the command **PEEK** into the library QGPL or QUSRSYS:

```
CRTDUPOBJ       OBJ(PEEK)
                 FROMLIB(PEEK)
                 OBJTYPE(*CMD)
                 TOLIB(QGPL)
                 NEWOBJ(PEEK)
```

6.4 Change Command Language

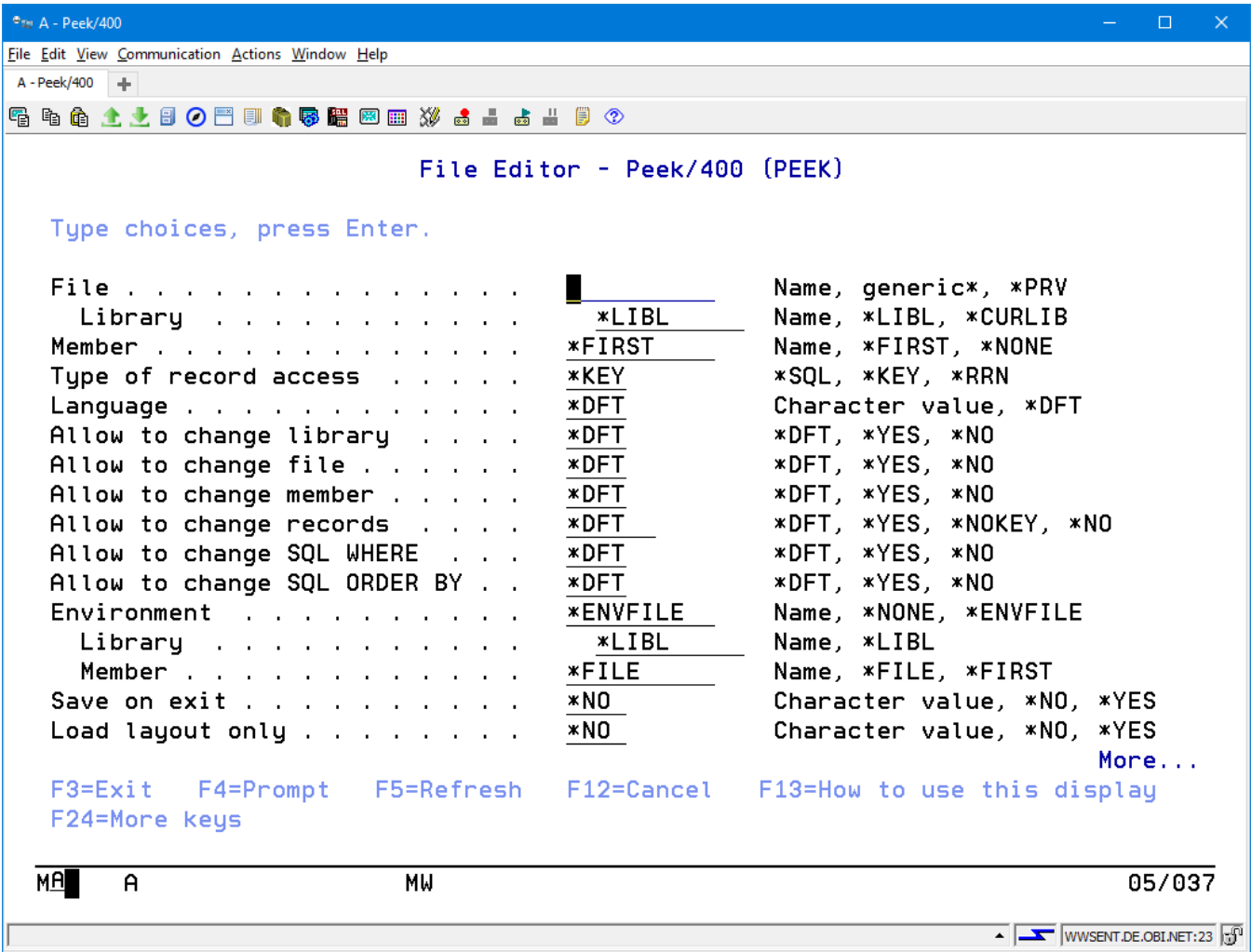
You can recompile commands PEEK and TREE for a language that is supported by Peek. At the moment GER, ENG, SPA, ITA and FRA are the only supported languages.

You should consider recompiling the Peek/400 commands in case most of your users are non German speakers.

```
PEEKINIT        LANGUAGE(GER | ENG | SPA | ITA | FRA)
```

7 Quick Start

Peek/400 will be started by entering PEEK at a command line.



(Screen: How to start **Peek/400**)

There are the following key words available:

File: File name and library name of the file to be explored.

Member: Name of the file member

Type of record access:
Display by record sequence (= *RRN) or by key sequence (= *KEY)

Language: Language to be used for the user interface.
Enter the short cut of the language to be used.

Example: GER is the short cut for the German language and ENG is the short cut for the English language.

Allow to change library:

Allowed to change the library in the main screen of **Peek/400**.

Allow to change file:

Allowed to change the file in the main screen of **Peek/400**.

Allow to change member:

Allowed to change the member in the main screen of **Peek/400**.

Allow to change records:

Allowed to insert, change, delete or copy records.

Allow to change SQL WHERE

Specifies whether or not it is allowed to change the SQL WHERE clause used to select the records to be displayed.

Allow to change SQL ORDER BY

Specifies whether or not it is allowed to change the SQL ORDER BY clause that defines the sort sequence of the records.

Environment:

Environment that should be loaded immediately after program start.

Save on exit:

Specifies whether or not the current environment is saved to the specified environment file and member when the program ends.

Load layout only:

Specifies whether or not to load only the layout from the specified environment file and keep the specified file and member.

User settings:

Specifies which user settings are used. By default the user settings are stored in the Peek/400 product library. The name of the settings file is equal to the name of the user profile that is signed on to the system.

SQL WHERE clause:

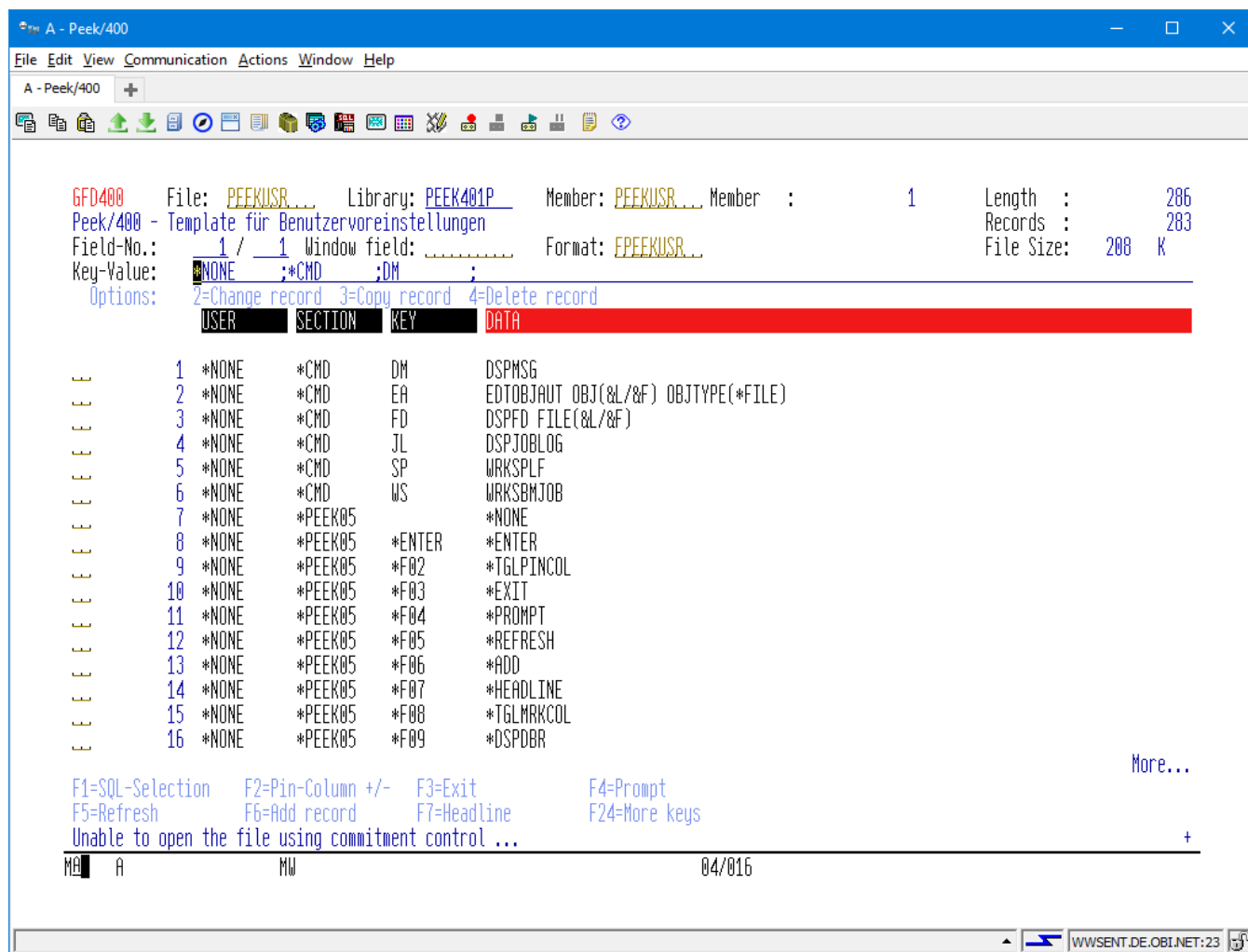
Specifies a SQL WHERE clause to select the records that are displayed.

SQL ORDER BY clause:

Specifies a SQL ORDER BY clause to set the sort sequence of the records that are displayed.

The first invocation of **Peek/400** will need a longer time than the next ones due to initialisation stuff that has to be done.

8 Main Screen Of Peek/400



(Screen: Main screen of **Peek/400**)

There are the following information available listed from left to right:

- Name of the AS/400-Systems
- File name, library and member of the opened file
- Record length of the opened file
- Object description of the opened file
- Number of active records of the opened file
- Number of the first visible field

- Field where you may enter a name of a field to position the screen
- Name of the record format of the opened file
- Object size of the opened file

There are the following abilities for navigation available:

Enter the number of a field to scroll left and right.

Enter the name of a field to scroll left and right.

Enter the key or a part of the key to scroll up and down.

You have to separate the fields of the key by a blank or the negative sign if there is a need for negative values.

More options and function keys:

Simply have a look at the screen and use F23 and F24 to explore the options for the subfile and the function keys.

9 Functions Reference

9.1 What You Should Know

Due to the fact that you are able to assign the functions of **Peek/400** to the keys and options of your choice we can not speak of keys and options within this handbook. You may have already changed it!

Therefore it is not possible to say "... by pressing F2 ...".

Instead you will find expressions like that:

„... you are able to refresh the screen by the function „AKTUALISIEREN“ ...“

The default keyboard mapping will be shown as the following examples:

<i>Function:</i>	„AKTUALISIEREN“
<i>Default:</i>	Key „F5“
<i>Program function:</i>	*REFRESH

The following phrase “*TGL” is a substitute for the English verb “to toggle”.

Functions including this prefix are able to switch a function on and off.

You may refer to the functions “ZEILEN PINNEN” (*PINROW) and “ZEILEN LÖSEN” (*UNPINROW). The first one pins a row and the second one unpins a row. But instead of them you may also use „UMSCHALTEN ZEILEN PINNEN“ (*TGLPINROW).

9.2 Subfile Options

9.2.1 Pin-Record

This function pins a record at the top of the subfile. Pinned records will not be affected by paging up and down. They stay at the top of the subfile until they are released by the user.

You have to use “ZEILEN LÖSEN” to release a pinned record.

If you refresh the screen your pinned records will be refreshed as well.

<i>Function:</i>	„ZEILEN PINNEN“
<i>Default:</i>	Option „P“
<i>Program function:</i>	*PINROW

Function: „UMSCHALTEN ZEILEN PINNEN“
Default: *NONE
Program function: *TGLPINROW

9.2.2 UnPin-Records

This function will release pinned records.

Function: „ZEILEN LÖSEN“
Default: Option „U“
Program function: *UNPINROW*

Function: „UMSCHALTEN ZEILEN PINNEN“
Default: *NONE
Program function: *TGLPINROW

Function: „ALLE ZEILEN LÖSEN“
Default: *NONE
Program function: *CLRPINROW

9.2.3 Change Record

This function is to be used to change the contents of a record.

Peek/400 has to generate a program to perfume this request. The program will be build once after the file format has been changed (level check).
(The program will be used by the functions *KOPIEREN* and *EINFÜGEN*, too.)

Function: „ÄNDERN“
Default: Option „2“
Program function: *CHANGE

9.2.4 Copy Record

This function allows to copy a record within the same file.

Peek/400 has to generate a program to perfume this request. The program will be build once after the file format has been changed (level check).
(The program will be used by the functions *ÄNDERN* and *EINFÜGEN*, too.)

Function: „KOPIEREN“
Default: Option „3“
Program function: *COPY

9.2.5 Delete Record

This function deletes a record from the file.

There is no special program necessary.

<i>Function:</i>	„LÖSCHEN“
<i>Default:</i>	Option „4“
<i>Program function:</i>	*DELETE

9.2.6 Display Record

This function displays a record within a window.

There is no special program necessary.

<i>Function:</i>	„ANZEIGEN“
<i>Default:</i>	Option „5“
<i>Program function:</i>	*DISPLAY

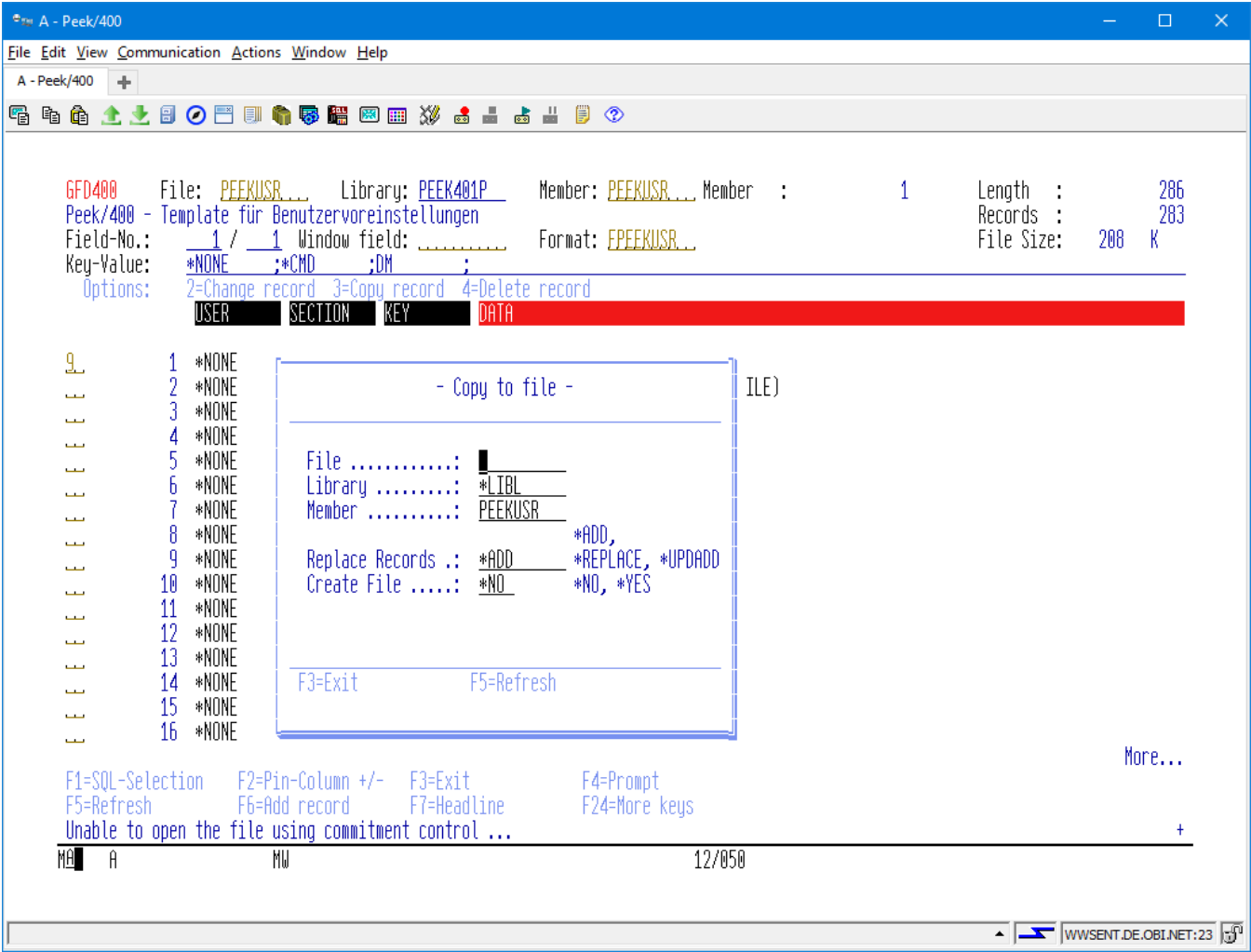
9.2.7 Copy Record Extern

This function is to be used to copy a record to an external file.

There is no special program necessary.

<i>Function:</i>	„EXT.KOPIEREN“
<i>Default:</i>	Option „9“
<i>Program function:</i>	*COPYEXT

Before the copy request can be performed you have to enter the target file, first:



(Screen: Copy record extern **Peek/400**)

File:

Name of the target file.

Library:

Name of the library holding the target file.
You may specify *LIBL if the target file exists.

Member:

Name of the member of the target file.

Replace:

Whether or not the records within the target file are replaced by the new records.

Create file:

Whether or not the target file will be created if it does not yet exist.

9.2.8 Move Screen To The Left By One Field

This function moves the screen to the left by one single field.

Function: „LINKS“
 Default: Option „L“
 Program function: *LEFT



The default keyboard mapping has been changed from F19 to option “L”.

9.2.9 Move Screen To The Right By One Field

This function moves the screen to the right by one single field.

Function: „RECHTS“
 Default: Option „R“
 Program function: *RIGHT

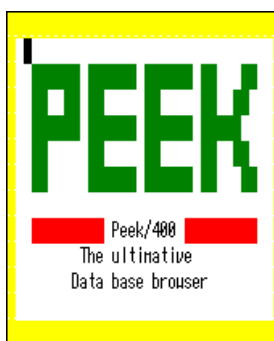


The default keyboard mapping has been changed from F20 to option “R”.

9.2.10 Activation Of The SPLASH-Screen

This function enables the splash screen that is been shown at the start of **Peek/400**.

Function: „EINSCHALTEN SPLASH SCREEN“
 Default: Option „S+“
 Program function: *SPLASHON



(Screen: SPLASH-Screen of **Peek/400**)

9.2.11 Deactivation Of The SPLASH-Screen

This function disables the splash screen that is been shown at the start of **Peek/400**.

Function: „AUSSCHALTEN SPLASH SCREEN“
Default: Option „S-“
Program function: *SPLASHOFF



It is not possible to deactivate the splash screen with the shareware licence of **Peek/400**.

9.2.12 Move Record to Top

This function moves a record to the top of the subfile.

Records are moved by “Point & Shoot”. Point to the record by the cursor and execute the move record function.

Function: „NACH OBEN ZIEHEN“
Default: Key „T“
Program function: *MOVETOP



The default keyboard mapping of F9 has been changed. You will find the display relations by pressing F9 now.

9.2.13 Rebuild Program

This function rebuilds the program that is used for changing, deleting and copying of records.

Function: „PROGRAMM ERSTELLEN“
Default: Option „RB“
Program function: *REBUILD

9.2.14 Move Screen To The Next Marked Column

This function moves the screen to the next marked column. It will wrap after the end of the columns has been reached.

Function: „NÄCHSTE MARKIERTE SPALTE“
Default: Option „X“
Program function: *NEXTMARK



You are able to mark columns by using F8 within the default keyboard mapping.

9.2.15 Move Screen To The Previous Marked Column

This function moves the screen to the previous marked column. It will wrap after the first of the columns has been reached.

Function: „VORHERIGE MARKIERTE SPALTE“
Default: Option „Y“
Program function: *PREVMARK



You are able to mark columns by using F8 within the default keyboard mapping.

9.2.16 Select records access by key sequence

This function selects record access by key sequence.

The new position of the subfile depends on the position of the cursor of the screen at the moment the function was executed:

- If the cursor was placed above the old subfile the new subfile will show the first record of the file as the first record of the new subfile.
- If the cursor was placed below the old subfile the new subfile will show the last record of the file as the last record of the new subfile.
- If the cursor was placed within the pinned records of the old subfile the new subfile will show the first record below the pinned records of the old subfile as the first record of the new subfile below the pinned records.
- If the cursor was placed within the „normal“ records of the old subfile the new subfile will show the record pointed by the cursor as the first record of the new subfile.

Function: „SCHLÜSSELFOLGE“
Default: *NONE
Program function: *KEY

Function: „UMSCHALTEN SORTIERUNG“
Default: Option „S“
Program function: *TGLACCESS

9.2.17 Select records access by record number sequence

This function selects record access by record number sequence.

The new position of the subfile depends on the position of the cursor of the screen at the moment the function was executed:

- If the cursor was placed above the old subfile the new subfile will show the first record of the file as the first record of the new subfile.
- If the cursor was placed below the old subfile the new subfile will show the last record of the file as the last record of the new subfile.
- If the cursor was placed within the pinned records of the old subfile the new subfile will show the first record below the pinned records of the old subfile as the first record of the new subfile below the pinned records.
- If the cursor was placed within the „normal“ records of the old subfile the new subfile will show the record pointed by the cursor as the first record of the new subfile.

Function: „SATZFOLGE“
Default: *NONE
Program function: *RRN

Function: „UMSCHALTEN SORTIERUNG“
Default: Option „S“
Program function: *TGLACCESS

9.2.18 „About“

This function will show up the „About“ screen of **Peek/400**.

The „About“ screen will give you specific information about the version of **Peek/400** and the actual address of the homepage of **Peek/400** in the internet.

Function: „ABOUT“
Default: Option „A“
Program function: *ABOUT

9.2.19 Hex Display Mode

This function switches the main screen of **Peek/400** into hex display mode.

Function: „HEX MODUS EIN“
Default: *NONE
Program function: *DSPHEX

Function: „UMSCHALTEN ANZEIGE MODUS“
Default: Option „H“
Program function: *TGLDSP

9.2.20 Normal Display Mode

This function switches the main screen of **Peek/400** into normal display mode.

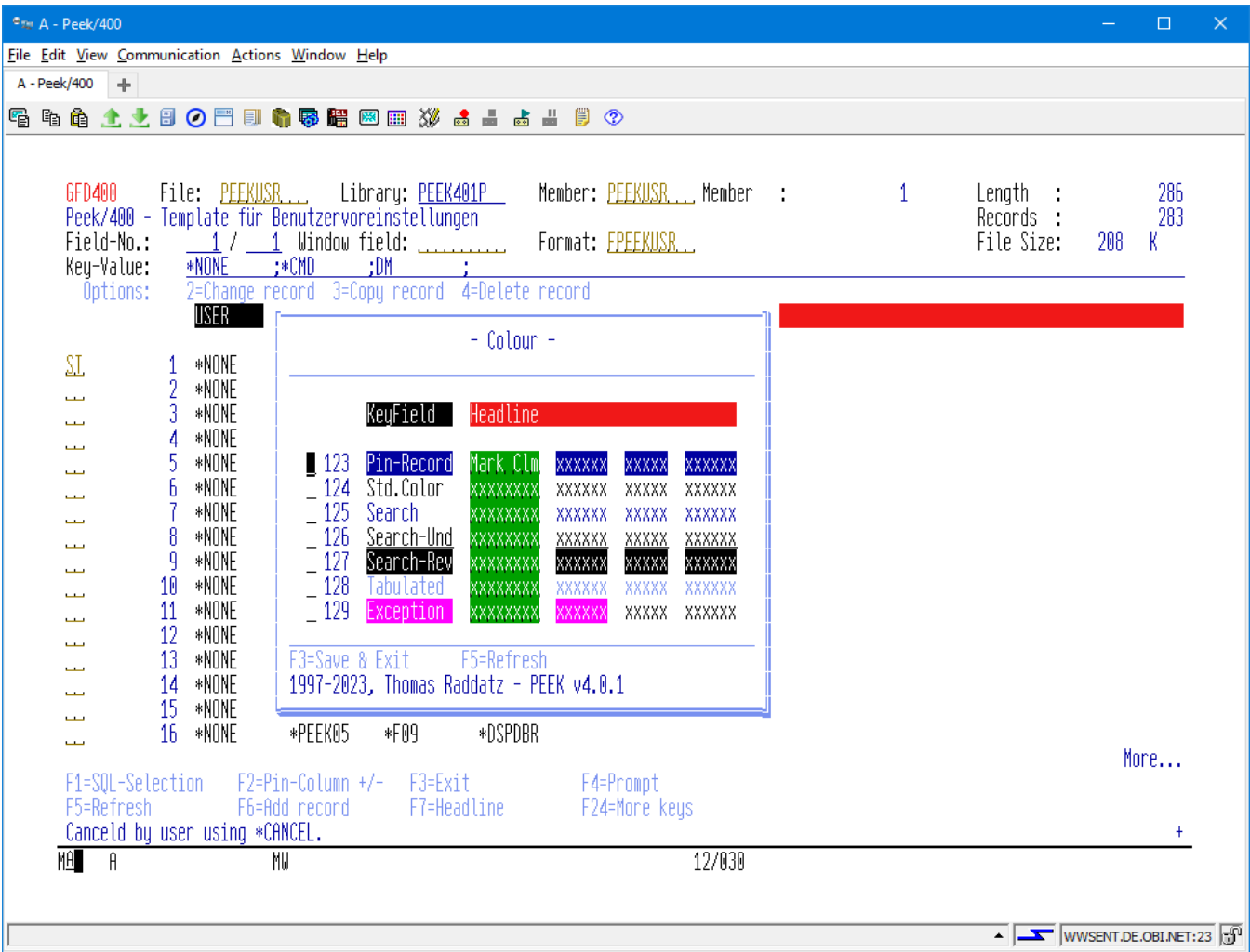
Function: „HEX MODUS AUS“
Default: *NONE
Program function: *DSPNRM

Function: „UMSCHALTEN ANZEIGE MODUS“
Default: Option „H“
Program function: *TGLDSP

9.2.21 Colours


This function allows to define your own colours for the main screen of **Peek/400**.

Have a look at the following dialog:



(Screen: Colours of Peek/400)

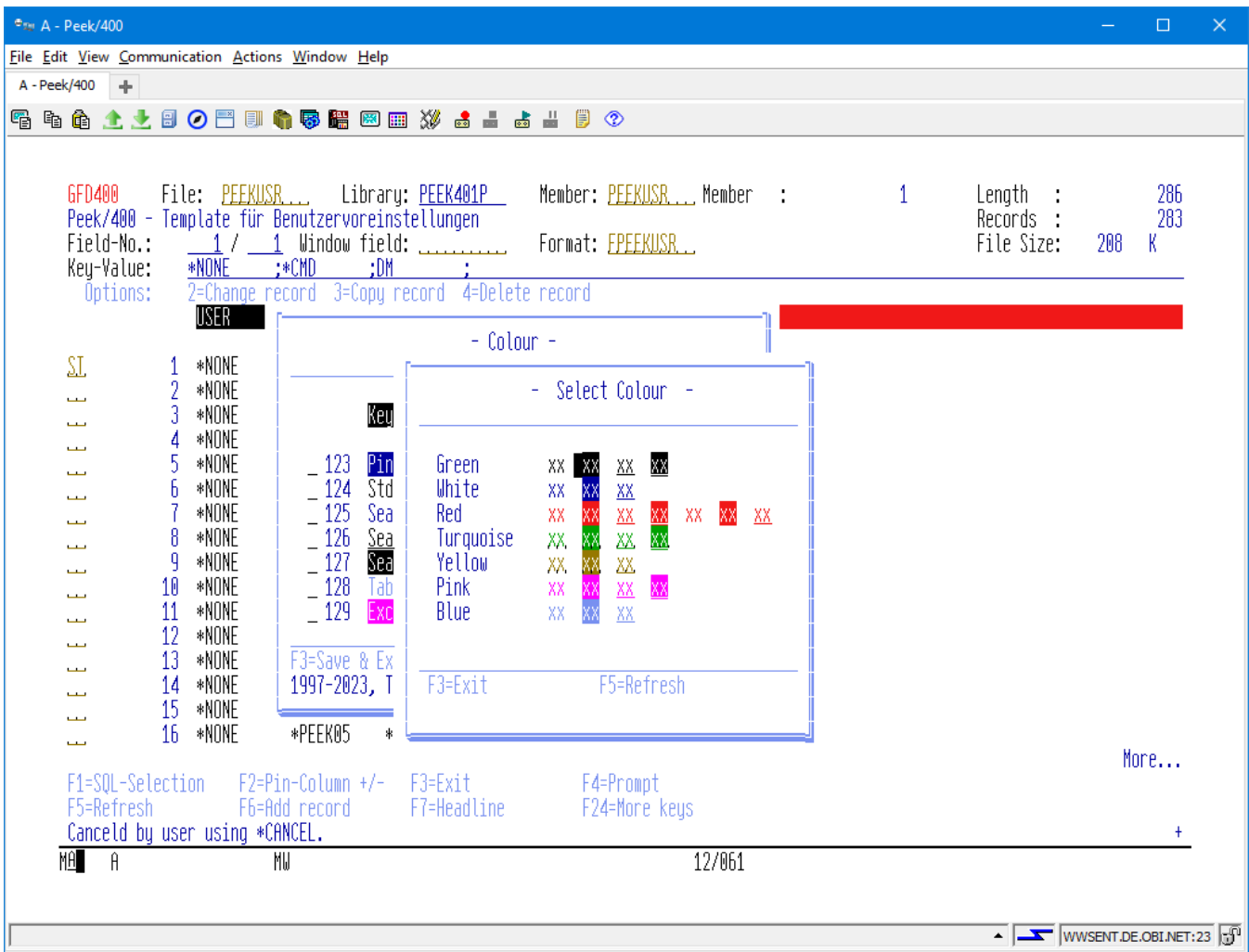
Function: „BENUTZEREINSTELLUNGEN“
Default: Option „ST“
Program function: *USERSETG



The default keyboard mapping has been changed from F15 to “ST”.
F15 has been mapped to the extended column pin function.

Colours are changed by “Point & Shoot”. Point to the colour to be changed by the cursor and press ENTER to execute your request.

The following screen will be displayed to select a new colour:



(Screen: Select a new colour for **Peek/400**)

Save the new settings by „SICHERN & BEENDEN“ or cancel by „ABBRECHEN“.

Function: „SICHERN & BEENDEN“
Default: Key „F3“
Program function: *SAVE_EXIT

Function: „ABBRECHEN“
Default: Key „F12“
Program function: *CANCEL

9.2.22 Save Environment

This function saves the actual environment to a specified member of your choice.

The properties being saved are:

- Sort sequence

- SQL select/order by
- Pinned rows
- Pinned columns
- Layout of the file

Function: „SICHERN ARBEITSUMGEBUNG“
Default: SE
Program function: *SAVEENV

The environment settings are stored in individual members in file PEEKENV. The library where PEEKENV is stored is specified in the preferences record associated to key [*ENVFILE](#).

9.2.23 Load Environment

This function loads an environment from a specified member of your choice.

The properties being loaded are:

- Sort sequence
- SQL select/order by
- Pinned rows
- Pinned columns
- Layout of the file

If you are going to load an environment you must be aware of the following restrictions:

- Sort sequence will be restored without restrictions
- Pinned rows are only restored if the file actually open is the same one when the environment had been saved. (Same File, same library)
- In order to restore the remaining properties the filename must match only.

Function: „LADEN ARBEITSUMGEBUNG“
Default: LE
Program function: *LOADENV

The environment settings are automatically loaded on opening a file, if the name of the file matches the name of the environment settings.

9.2.24 Delete Environment

This function dedicated to delete an environment.

Function: „LÖSCHEN ARBEITSUMGEBUNG“
Default: DE
Program function: *DELETEENV

9.3 Function Keys

9.3.1 SQL-SELECTION

The function „SQL-AUSWAHL“ let you select and order records by SQL.



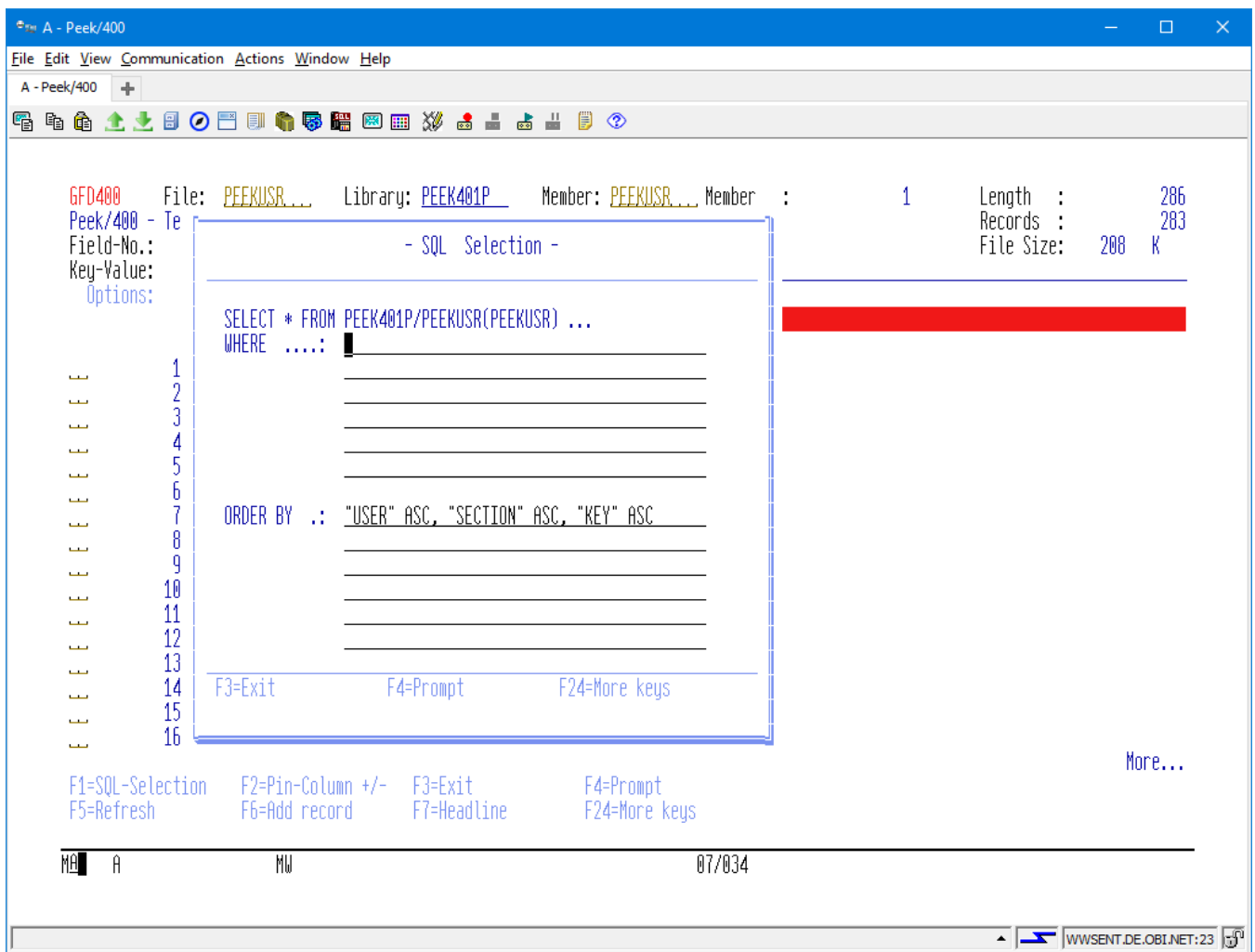
This function is only available in conjunction with physical files!



It is not possible to position the subfile by entering a key value or a record number. All other options and functions will work as before.

Function: „SQL-AUSWAHL“
Default: Funktionstaste „F1“
Program function: *SQL

The dialog looks like this:



(Screen: SQL-Selection of **Peek/400**)

The fields of the current file can be viewed and inserted by „PROMPT“ (*PROMPT, F4). The selected field will be inserted at the current position of the cursor.

The key fields of the current file can be inserted by „EINFÜGEN SCHLÜSSELFELDER“ (*INSKEYFLD, F11). The fields will be inserted at the current position of the cursor.

9.3.2 Pin-Column

This function pins a column at the left edge of the subfile. The pinned columns will not be affected by scrolling left and right. They stay at the left edge of the subfile until they are released by the user.

Columns are pinned by “Point & Shoot”. Point to the column by the cursor and execute the pin function.

Function: „SPALTEN PINNEN“
Default: *NONE
Program function: *PINCOL

Function: „UMSCHALTEN SPALTEN PINNEN“
Default: Key „F2“
Program function: *TGLPINCOL

9.3.3 UnPin-Column

This function releases pinned columns.

Columns are unpinned by “Point & Shoot”. Point to the column by the cursor and execute the unpin function.

Function: „SPALTEN LÖSEN“
Default: *NONE
Program function: *UNPINCOL

Function: „UMSCHALTEN SPALTEN PINNEN“
Default: Key „F2“
Program function: *TGLPINCOL

Function: „ALLE SPALTEN LÖSEN“
Default: *NONE
Program function: *CLRPINCOL

9.3.4 Exit

This function exits **Peek/400**.

All user settings will be save.

Function: „BEENDEN“
Default: Key „F3“
Program function: *EXIT

9.3.5 Prompt

This function shows a field specific dialog in order to select an option.

Function: „PROMPT“
Default: Funktionstaste „F4“
Program function: *PROMPT

9.3.6 Refresh

This function refreshes the screen.

Function: „AKTUALISIEREN“
Default: Key „F5“
Program function: *REFRESH

9.3.7 Insert Record

This function inserts a record into the opened file.

Peek/400 has to generate a program to perform this request. The program will be build once after the file format has been changed (level check).

(The program will be used by the functions *ÄNDERN* and *KOPIEREN*, too.)

Function: „EINFÜGEN“
Default: Key „F6“
Program function: *ADD

9.3.8 Toggle Headline

This function toggles the headline to display the fieldname or the column heading of the fields.

Function: „ÜBERSCHRIFT“
Default: Key „F7“
Program function: *HEADLINE

9.3.9 Mark Column

This function marks “important” columns by a different colour.

Columns are marked by “Point & Shoot”. Point to the column by the cursor and execute the mark column function.

Function: „SPALTEN MARKIEREN“
Default: *NONE
Program function: *MRKCOL

Function: „UMSCHALTEN SPALTE MARKIEREN“
Default: Key „F8“
Program function: *TGLMRKCOL

9.3.10 Release Mark Column

This function releases marked columns.

Marked Columns are released by “Point & Shoot”. Point to the column by the cursor and execute the release marked column function.

Function: „SPALTEN MARKIERUNG AUFHEBEN“
Default: *NONE
Program function: *UNMRKCOL

Function: „UMSCHALTEN SPALTE MARKIEREN“
Default: Key „F8“
Program function: *TGLMRKCOL

9.3.11 Display Database Relations

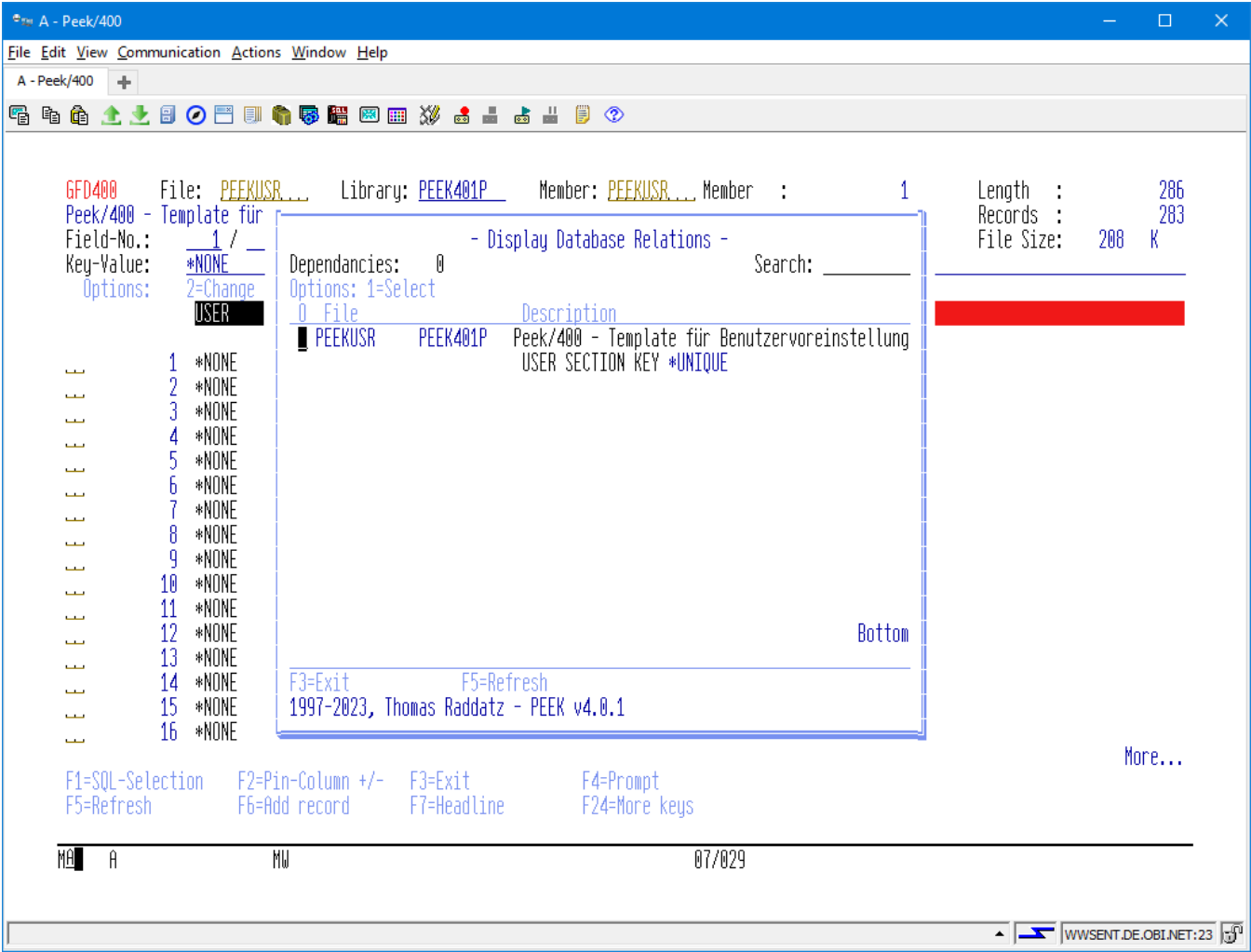
This function displays all database relations of a physical file.

Function: „RELATIONEN ANZEIGEN“
Default: Key „F9“
Program function: *DSPDBR



The default keyboard mapping of F9 has been changed. You will find “move to top” by entering option “T” now.

The dialog looks like:



(Screen: Display Database Relations of **Peek/400**)

9.3.12 Position Cursor

This function places the cursor into the field to enter the relative record number or the key of the opened file.

Function: „CURSOR POSITIONIEREN“
Default: Key „F10“
Program function: *POSCSR

9.3.13 Change Layout

This function provides the ability to change the layout of the subfile. You are able to re-order the fields, to float key fields to top and to define a maximum width of the fields.

Function: „LAYOUT“
Default: Key „F11“
Program function: *LAYOUT

You are able to change the following attributes:

- Order of the fields

Define your own order of the fields.

- Hide a field if it is not of interest to you

Accepted values:

0 = hidden

1 = visible

- Editcode of a numeric field

Assign the editcode of your choice for the representation of a field within the subfile.

- Maximum width of a field

Define a maximum width of a field if its headline is too long.

- Colour of the marked columns

Change the colour of the marked columns function for a single field. You may also make use of the user settings dialog where you can define a global colour for marked columns.

The colour can be changed by entering a character of your choice into the field named "Colour" and pressing ENTER. After that you can select the colour of your choice by "Point & Shoot", then.

- Mark/Release columns

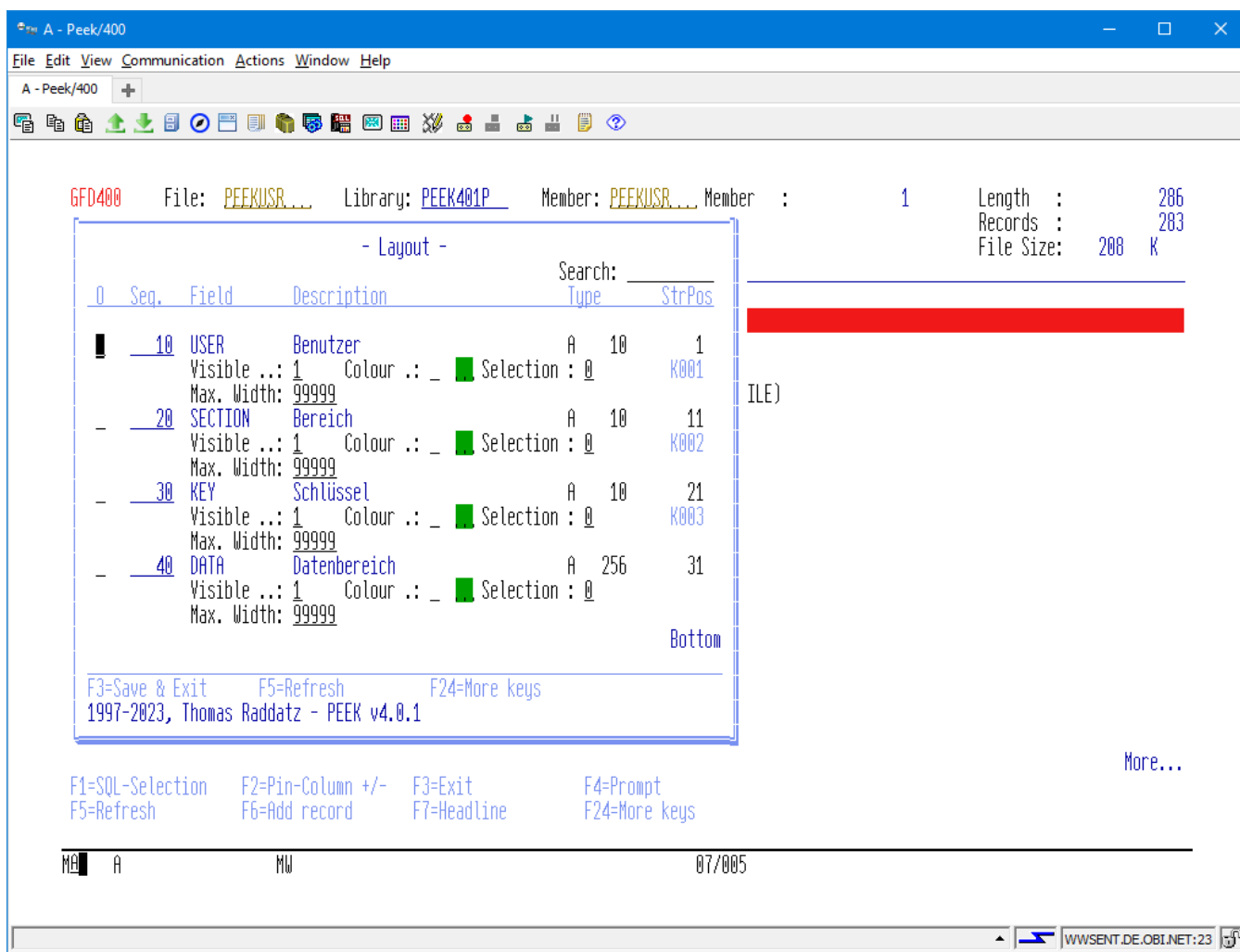
Define a column as marked or not.

Accepted values are:

0 = column is displayed as marked

1 = column is not displayed as marked

Have a look at the layout screen:



(Screen: Change layout of **Peek/400**)

You may float the key fields to top by the function „SCHLÜSSEL AN ANFANG SORTIEREN“.

Function: „SCHLÜSSEL AN ANFANG SORTIEREN“
Default: Key „F11“
Program function: *FLOATKEYS

9.3.14 Repeat Option

This function repeats the option of a subfile record like PDM does.

Function: „WIEDERHOLEN“
Default: Key „F13“
Program function: *REPEAT

9.3.15 Enable Multi Colour Lines

This function changes the subfile to display the records using alternating colours.

Function: „EINSCHALTEN TABELLIERPAPIER“
Default: *NONE
Program function: *TBLPAPON

Function: „UMSCHALTEN TABELLIERPAPIER“
Default: Key „F14“
Program function: *TGLTBLPAP

9.3.16 Disable Multi Colour Lines

This function changes the subfile to display the records using a single colour.

Function: „AUSSCHALTEN TABELLIERPAPIER“
Default: *NONE
Program function: *TBLPAPOFF

Function: „UMSCHALTEN TABELLIERPAPIER“
Default: Key „F14“
Program function: *TGLTBLPAP

9.3.17 Extended column pin function

With this function you can select columns to be pinned from a subfile screen.

Function: „SPATLEN PINNEN DIALOG“
Default: Key „F15“
Program function: *PINCOLDLG

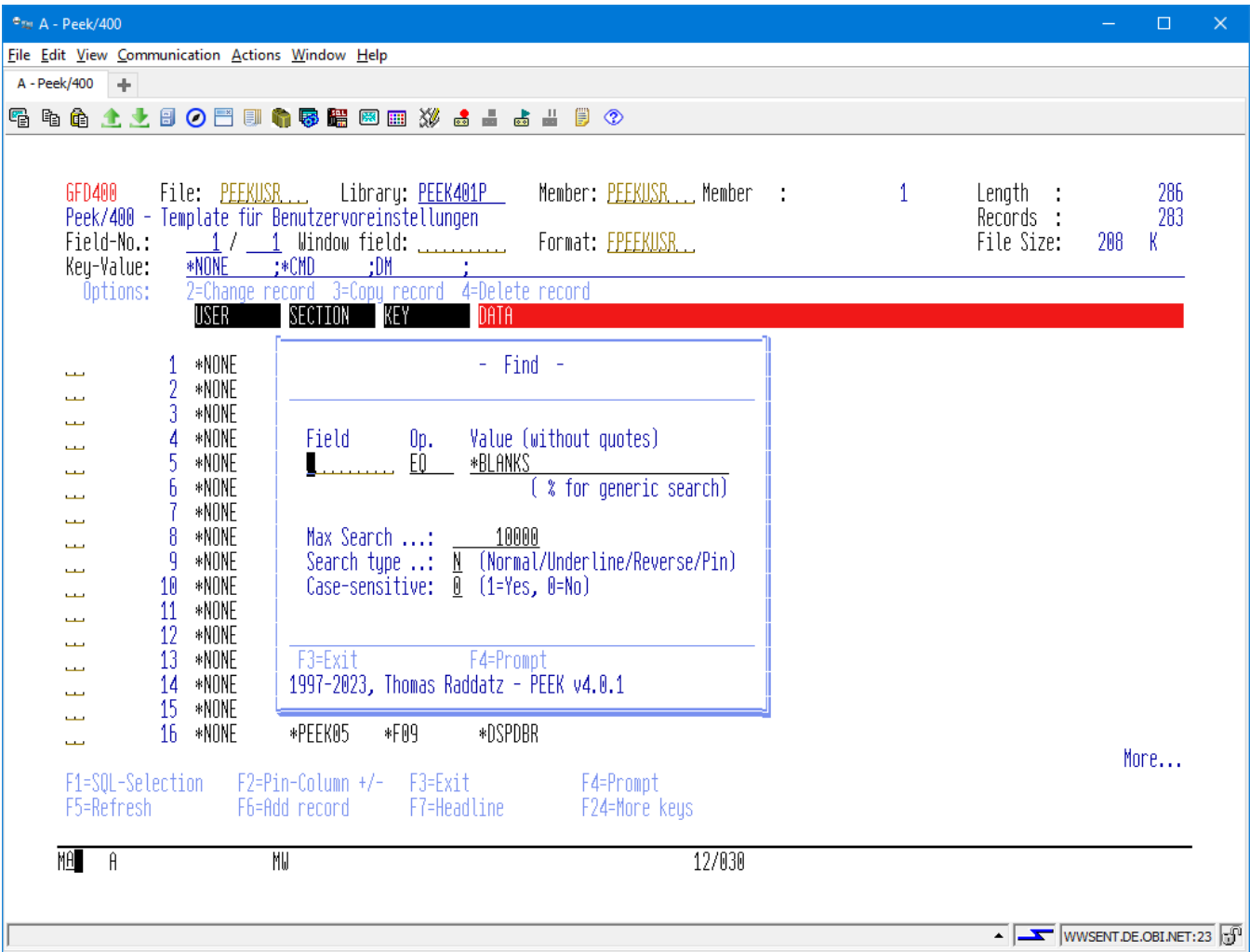


The default keyboard mapping of F15 has been changed. You will find the user settings by option “ST” now.

9.3.18 Search Engine

This function allows sequential searching through the records of the opened file.

Have a look at the following screen:



(Screen: Search engine of **Peek/400**)

Function: „SUCHEN“
Default: Key „F16“
Program function: *SEARCH

Field:

The name of the field which contents is to be searched for. Use the special value *RECORD if you want to search the whole record without the limitations of any fields.

Operand:

The type of the operand for the compare.

Use one of the following operands:

- EQ - Equal
- NE - Not equal

GT - Greater
LT - Lower
GE - Greater/Equal
LE - Lower/Equal
LIKE - like (*for generic Search*)
NLIKE- not like (*for generic Search*)

If you use *RECORD *you have to use* LIKE or NLIKE.

Value:

The argument that you are searching for.

There are the following special values available:

*BLANKS - Searching for blanks
*ZEROS - Searching for zeros

Max. Nbr. of records:

Due to the sequential search it is recommended to set a limit to the number of records to be scanned for the search argument.

After the maximum number of records have been processed you are able to restart the search by executing the function "SUCHEN" once again.

Type of search:

There are the following type of the search available:

N - Normal Search Mode

After the record has been found it will be placed at the top of the subfile. The next record will be found by executing "SUCHEN" once again.

U - Underlined Search Mode

After the record has been found it will be placed at the top of the subfile. The record and all other records within the window that matches the argument will be shown in underlined mode, too.

R - Reverse Mode

After the record has been found it will be placed at the top of the subfile. The record and all other records within the window that matches the argument will be shown in reversed mode, too.

P - Search & Pin

After the record has been found it will be pinned. The search will continue automatically and it stops after there is no more place for more records or the maximum number of records has been processed.



You are not able to re-define „N, U, R and P“!

9.3.19 Top Of File

This function moves the cursor to the top of the file.

Function: „DATEIANFANG“
Default: Key „F17“
Program function: *TOP

9.3.20 End Of File

This function moves the cursor to the end of the file.

Function: „DATEIENDE“
Default: Key „F18“
Program function: *BOT

9.3.21 Move Screen To The Left

This function moves the screen to the left.

Function: „SEITE LINKS“
Default: Key „F19“
Program function: *PAGELEFT



The default keyboard layout has been changed from *LEFT to *PAGELEFT.

9.3.22 Move Screen To The Right

This function moves the screen to the right.

Function: „SEITE RECHTS“
Default: Key „F20“
Program function: *PAGERIGHT



The default keyboard layout has been changed from *RIGHT to *PAGERIGHT.

9.3.23 Command Line

This function provides an OS/400 command line.

Function: „BEFEHLSZEILE“
Default: Key „F21“
Program function: *CMDLINE

9.3.24 80/132 Display Mode

This function toggles between 80 character and 132 character screen resolution.

Function: „ANZEIGEMODUS“
Default: Key „F22“
Program function: *132/80

9.3.25 More Options

This function displays more available option.

Function: „WEITERE AUSWAHLEN“
Default: Key „F23“
Program function: *MOREOPT

9.3.26 More Keys

This function displays more available keys.

Function: „WEITERE TASTEN“
Default: Key „F24“
Program function: *MOREKEYS

9.4 Other Functions

9.4.1 Prompt

Prompt let you select an option for a field by a subfile dialog if this function is been supported by the field.

Just key in “?” into the field for the fieldname and press ENTER to activate the prompt function.

The following fields supports the prompt function:

- Field name
(Main screen and search engine)
- Member
(Main screen)

9.4.2 Short Command

Like SEU you can define short commands within **Peek/400**. The short commands that you define can be executet within every subfile option within **Peek/400**.

The short commands are defined in the user’s configuration file of **Peek/400** that is hold in the program library of **Peek/400**.

This is an example of a shipped short command that displays the file description of the currently opened file:

Benutzer	Bereich	Schlüssel	Datenbereich
<i>user name</i>	*CMD	FD	DSPFD FILE(&L/&F)

Benutzer: user name.

Bereich: constant „*CMD“

Schlüssel: option

Datenbereich: Command with or without replacement variables

You can make use of the following described replacement variables:

Variable	Replaced by
&L	the name of the library that holds the currently opened file
&F	the name of the currently opened file
&N	the name of the currently opened file member
&R	relative record number
% + field name	the value of a field of the current record

The names of the replacement variables are inspired by SEU.

Starting with v3.0 you can specify the data type of the '%' field replacement variables. Example:

%FIELDNAME (P, 4, 2)

In the example above the value of %FIELDNAME is passed as a packed 4-digit value with two decimal positions to the called program. The following data types are supported:

'A'	Alpha
'B'	Binary
'I'	Integer
'U'	Unsigned Integer
'P'	Packed
'S'	Zoned

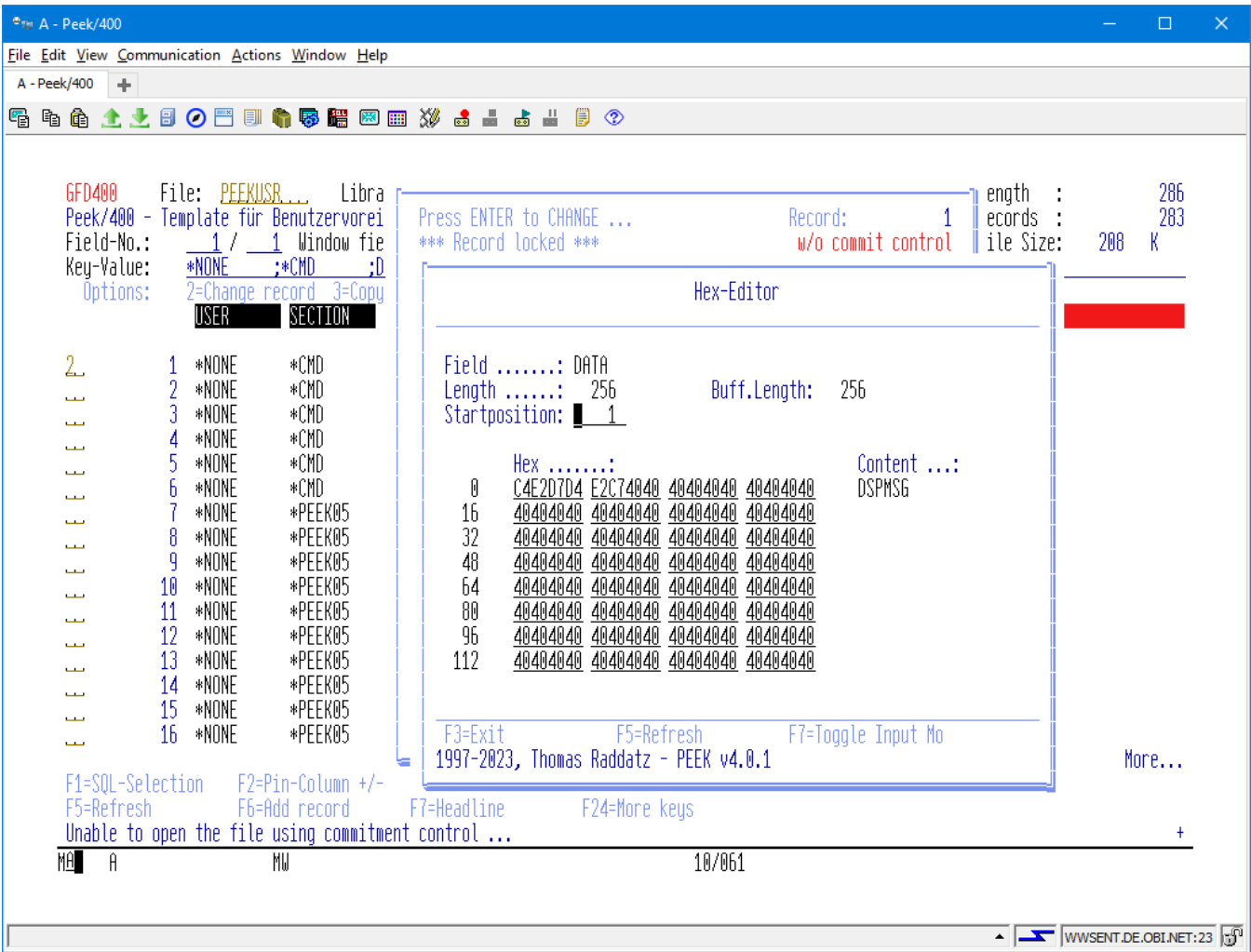
10 Hex-Editor

With „HEX-EDIT“ you are able to edit the content of a field in hex mode. This is very usefull if a field contains invalid numerical characters. Usually a field with invalid numerical characters can not be edited. With „HEX- can edit the field!

If you need to hex-edit a field, choose option 2 EDIT“ you in the subfile and press the enter key. This will invoke the „Record Change“ window. By default „HEX-EDIT“ can be activated by pressing F9, then. Point to the field to be edited with the cursor and press F9.

If you want to edit a field with invalid numerical characters you have to point to the string „Unprintable Char“ and press F9, then.

You can move the visible part of your field by entering a new start position into the field „Start position“.



(Screen: Hex-Editor of Peek/400)

The edit window can be moved to any position within the data field via the "Start position" field.

10.1 Scrolling

The following function keys are available for scrolling through the data field:

- Page Up
- Page Down
- F17 – First Pos.
- F18 – Last Pos.
- F19 – Links (Towards the beginning of the text)
- F20 – Links (Towards the end of the text)

10.2 Toggle Input Mode

With the function key "F7" you can switch between "Hex Input" and "Text Input".

10.3 Inserting Text

This feature is not available at this time.

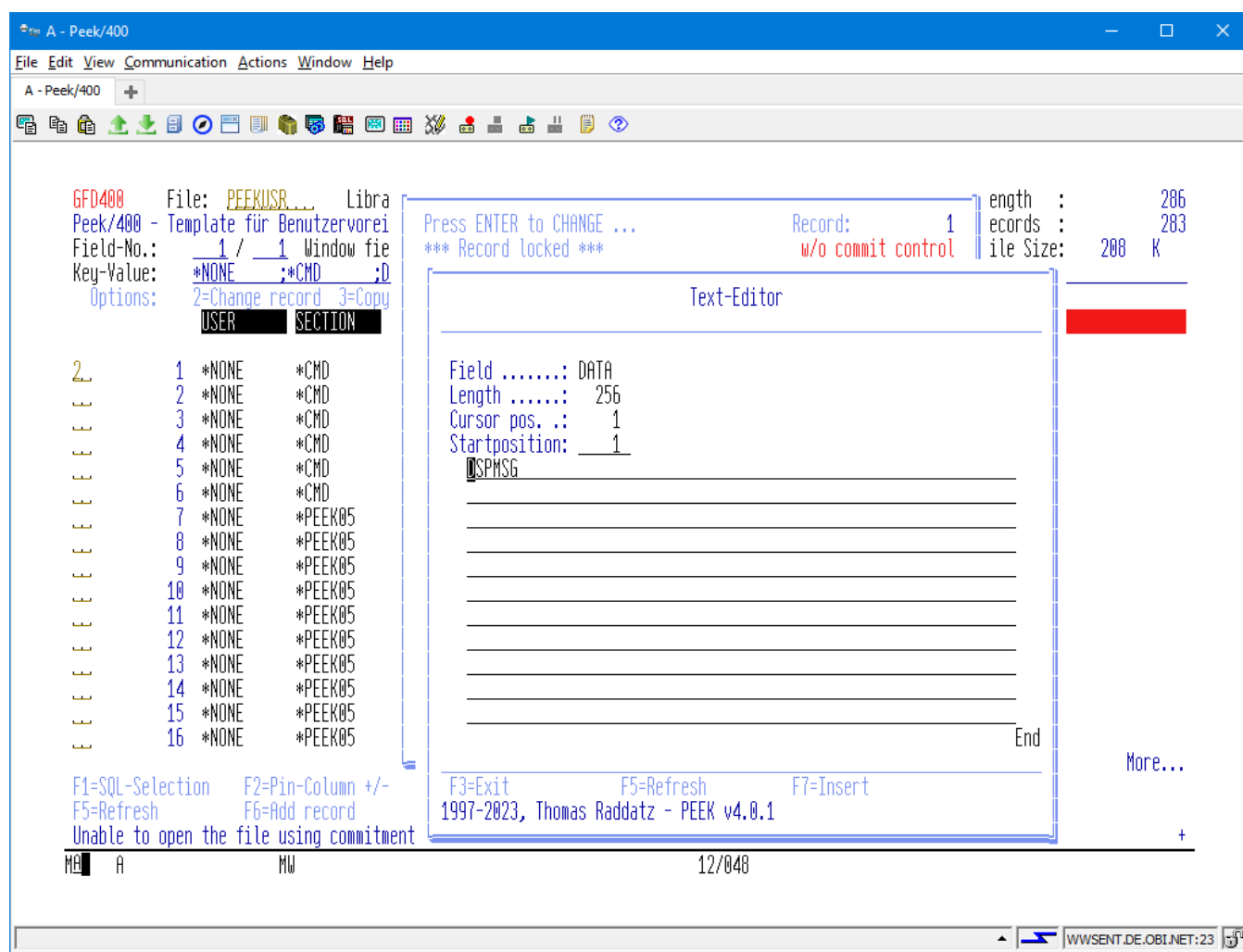
10.4 Deleting Text

This feature is not available at this time.

11 Text-Editor

With „TEXT-EDIT“ you are able to edit the content of a field up to a field length of 1024 byte.

If you need to text-edit a field, choose option 2 EDIT“ you in the subfile and press the enter key. This will invoke the „Record Change“ window. By default „TEXT-EDIT“ can be activated by pressing F10, then. Point to the field you want to edit with the cursor and press F10.



(Screen: Text-Editor of Peek/400)

The edit window can be moved to any position within the data field via the "Start position" field.

The Cursor Pos. field displays the position of the cursor within the data field.

11.1 Scrolling

The following function keys are available for scrolling through the data field:

- Page Up
- Page Down
- F17 – First Pos.
- F18 – Last Pos.
- F19 – Links (Towards the beginning of the text)
- F20 – Links (Towards the end of the text)

11.2 Inserting Text

The function key "F7" activates the insert mode. If the cursor is in the text field when activated, the current cursor position is copied to the "from" field.

Now you can enter the desired number of spaces to be inserted.

Pressing the "ENTER" button completes the process.

The F5 key refreshes the screen and cancels the insert mode. The process is also aborted when the cursor is in the text box and the F7 key is pressed without changing the position of the cursor.

11.3 Deleting Text

The function key "F8" activates the delete mode. If the cursor is in the text field when activated, the current cursor position is copied to the "from" field.

Now you can either enter the position of the last character to be deleted, which may have to be determined in a cumbersome way. It is easier to move the cursor to the last character to be deleted and press the function key "F8" one more time.

Pressing the "ENTER" button completes the process.

The "F5" key refreshes the screen and cancels the delete mode. The process is also aborted if the cursor is in the text box and the F8 key is pressed without changing the position of the cursor.

12 Keys and Options

12.1 Introduction

The keyboard mapping of the keys and the options can be configured by the user itself. If you do not like the default keyboard mapping just change it as you like, then!

The keyboard mapping is been stored within the **Peek/400** configuration file. The name of the configuration file is like the name of your user profile and it is placed in the **Peek/400** program library.

You may directly edit, insert or even delete these entries.

File format description:

Benutzer	Name of the user
Section	Section where the entry is been used
Key	Key for the entry
Data	Data part of the entry

12.2 Example

Assume that there are the following two entry defined for the use within PEEK05 which is the main program of **Peek/400**.

Old:

Benutzer	Section	Key	Data	Bemerkung
TESTUSER	*PEEK05	*F02	*TGLPINCOL	Pin-Column
TESTUSER	*PEEK05	*F03	*EXIT	End program

12.2.1 Redefine of a key mapping

Just change „*F02“ to „*F06“ and the pin-column function will be executed by pressing F6 instead of pressing F2.

New:

Benutzer	Section	Key	Data	Bemerkung
TESTUSER	*PEEK05	*F06	*TGLPINCOL	Pin-Column
TESTUSER	*PEEK05	*F03	*EXIT	End program

12.2.2 Redefine a key to an option

Simply change „*F03“ to „X“ and you will be able to exit **Peek/400** by entering “X” instead of pressing F3.

New:

Benutzer	Section	Key	Data	Bemerkung
TESTUSER	*PEEK05	*F02	*TGLPINCOL	Pin-Column
TESTUSER	*PEEK05	X	*EXIT	End program

12.2.3 Define two choices for one function

Of course you can define more than one way to execute a function of **Peek/400**. Have a look at the following example:

New:

Benutzer	Section	Key	Data	Bemerkung
TESTUSER	*PEEK05	*F02	*TGLPINCOL	Pin-Column
TESTUSER	*PEEK05	X	*EXIT	End program
TESTUSER	*PEEK05	*F03	*EXIT	End program, too

12.3 Available functions of Peek/400

12.3.1 Main Program Of **Peek/400**, *PEEK05

Function	Default	Description
*NONE	' '	Keine Funktion ausführen
*ENTER	ENTER	enter
*SQL	F1	select records by SQL
*TGLPINCOL	F2	toggle pin-column
*EXIT	F3	exit program
*PROMPT	F4	Prompt
*REFRESH	F5	refresh screen
*ADD	F6	insert record
*HEADLINE	F7	toggle headline
*TGLMRKCOL	F8	toggle marked columns
*DSPDBR	F9	display database relations
*POSCSR	F10	position cursor
*LAYOUT	F11	change layout
*CANCEL	F12	cancel
*REPEAT	F13	repeat option
*TGLTBLPAP	F14	toggle multi colour lines
*PINCOLDLG	F15	pin and unpin columns (dialog)

*SEARCH	F16	search engine
*TOP	F17	goto top of file
*BOT	F18	goto bottom of file
*PAGELEFT	F19	move screen to the left, whole screen
*PAGERIGHT	F20	move screen to the right, whole screen
*CMDLINE	F21	OS/400 command line
*132/80	F22	80-/132-character resolution
*MOREOPT	F23	more options
*MOREKEYS	F24	more keys
*PAGEUP	PgUp	scroll up
*PAGEDOWN	PgDn	scroll down
*ABOUT	A	"About Peek/400"
*DELETEENV	DE	Delete Environment
*TGLDSP	H	Toggle display mode hex to normal
*TGLKEYLUC	K	Toggle Key Mode 'upper case'/'lower case'
*LEFT	L	move screen to the left, step one field
*LOADENV	LE	Load environment
*PINROW	P	pin row
*RIGHT	R	move screen to the right, step one field
*REBUILD	RB	rebuild update program
*TGLACCESS	S	Toggle order
*SPLASHON	S+	enable SPLASH-Screen
*SPLASHOFF	S-	disable SPLASH-Screen
*SAVEENV	SE	Save environment
*USERSETG	ST	colour preferences
*MOVETOP	T	move record to top
*UNPINROW	U	release pinned row
*CLRPINCOL	UC	release all pinned columns
*CLRPINROW	UR	release all pinned rows
*NEXTMARK	X	scroll right to the next marked column
*PREVMARK	Y	scroll left to the previous marked column
*CHANGE	2	change record
*COPY	3	copy record
*DELETE	4	delete record
*DISPLAY	5	display record
*PRINT	6	print record
*COPYEXT	9	copy record to extern file
*CMD	...	execute short command
*KEY	-/-	Select order by key sequence
*MRKCOL	-/-	mark column
*PINCOL	-/-	pin column
*RRN	-/-	Select order by record number sequence
*TBLPAPOFF	-/-	disable multi colour line representation
*TBLPAPON	-/-	enable multi colour line representation
*UNMRKCOL	-/-	unmark column
*UNPINCOL	-/-	release pinned column

12.3.2 Select Record Format, *PEEK12

Function	Default	Description
*ENTER	ENTER	enter
*EXIT	F3	exit program
*REFRESH	F5	refresh screen
*CANCEL	F12	cancel
*MOREKEYS	F24	more keys
*PAGEUP	PgUp	scroll up (can not be changed by the user!)
*PAGEDOWN	PgDn	scroll down (can not be changed by the user!)

12.3.3 Display Record, *PEEK14

Function	Default	Description
*ENTER	ENTER	enter
*EXIT	F3	exit program
*REFRESH	F5	refresh screen
*HEADLINE	F7	toggle headline
*HEXEDIT	F9	hex-editor (display mode)
*STREDIT	F10	text-editor (display mode)
*CANCEL	F12	cancel
*TOP	F17	goto top of file
*BOT	F18	goto botton of file
*PRINT	F21	print record
*YESTOALL	F22	yes to all selected records (only available with some functions, e.g. „LÖSCHEN“)
*MOREKEYS	F24	more keys
*PAGEUP	PgUp	scroll up (can not be changed by the user!)
*PAGEDOWN	PgDn	scroll down (can not be changed by the user!)

12.3.4 Search Engine, *PEEK17

Function	Default	Description
*ENTER	ENTER	enter
*EXIT	F3	exit program
*PROMPT	F4	prompt
*REFRESH	F5	refresh screen
*CANCEL	F12	cancel
*MOREKEYS	F24	more keys

12.3.5 Colour, *PEEK24

Function	Default	Description
*ENTER	ENTER	enter
*SAVE_EXIT	F3	Save & exit program
*REFRESH	F5	refresh screen
*CANCEL	F12	cancel
*MOREKEYS	F24	more keys
*EXIT	-/-	exit program

12.3.6 Select Colour, *PEEK25

Function	Default	Description
*ENTER	ENTER	enter
*EXIT	F3	exit program
*REFRESH	F5	refresh screen
*CANCEL	F12	cancel
*MOREKEYS	F24	more keys

12.3.7 Target File, *PEEK26

Function	Default	Description
*ENTER	ENTER	enter
*EXIT	F3	exit program
*REFRESH	F5	refresh screen
*CANCEL	F12	cancel
*MOREKEYS	F24	more keys

12.3.8 Layout, *PEEK34

Function	Default	Description
*NONE	''	no action
*ENTER	ENTER	enter
*SAVE_EXIT	F3	Save & exit program
*REFRESH	F5	refresh screen
*FLOATKEYS	F11	float keys to top
*CANCEL	F12	cancel
*SERACH	F16	search
*TOP	F17	goto top of file
*BOT	F18	goto botton of file
*MOREKEYS	F24	more keys
*PAGEUP	PgUp	scroll up

*PAGEDOWN	PgDn	(can not be changed by the user!) scroll down (can not be changed by the user!)
*EXIT	-/-	exit program

12.3.9 Prompt/Autoprompt: Fieldname, *PEEK37

Function	Default	Description
*NONE	' '	no action
*ENTER	ENTER	enter
*EXIT	F3	exit program
*REFRESH	F5	refresh screen
*CANCEL	F12	cancel
*SERACH	F16	search
*TOP	F17	goto top of file
*BOT	F18	goto botton of file
*MOREOPT	F23	more options
*MOREKEYS	F24	more keys
*PAGEUP	PgUp	scroll up (can not be changed by the user!)
*PAGEDOWN	PgDn	scroll down (can not be changed by the user!)
*SELECT	1	select subfile record

12.3.10 Display Database Relations, *PEEK40

Function	Default	Description
*ENTER	ENTER	enter
*EXIT	F3	exit program
*REFRESH	F5	refresh screen
*CANCEL	F12	cancel
*SERACH	F16	search
*TOP	F17	goto top of file
*BOT	F18	goto botton of file
*MOREOPT	F23	more options
*MOREKEYS	F24	more keys
*PAGEUP	PgUp	scroll up (can not be changed by the user!)
*PAGEDOWN	PgDn	scroll down (can not be changed by the user!)
*SELECT	1	select subfile record

12.3.11 Hex-Editor, *PEEK45

Function	Default	Description
*ENTER	ENTER	enter
*EXIT	F3	exit program
*REFRESH	F5	refresh screen
*TGLINPUT	F7	toggle input mode
*CANCEL	F12	cancel
*FIRSTPOS	F17	goto first position
*LASTPOS	F18	goto last position
*LEFT	F19	move screen backward
*RIGHT	F20	move screen forward
*MOREKEYS	F24	more keys

12.3.12 Prompt: Select Member, *PEEK47

Function	Default	Description
*NONE	' '	no action
*ENTER	ENTER	enter
*EXIT	F3	exit program
*REFRESH	F5	refresh screen
*CANCEL	F12	cancel
*SEARCH	F16	search
*TOP	F17	goto top of file
*BOT	F18	goto botton of file
*MOREOPT	F23	more options
*MOREKEYS	F24	more keys
*PAGEUP	PgUp	scroll up (can not be changed by the user!)
*PAGEDOWN	PgDn	scroll down (can not be changed by the user!)
*SELECT	1	select subfile record

12.3.13 SQL Selection, *PEEK48

Function	Default	Description
*ENTER	ENTER	enter
*EXIT	F3	exit program
*PROMPT	F4	prompt
*REFRESH	F5	refresh screen
*DSPDBR	F9	display & select database relation (key)
*INSKEYFLD	F11	insert key fields
*CANCEL	F12	cancel

*MOREKEYS F24 more keys

12.3.14 About, *PEEK49

Function	Default	Description
*ENTER	ENTER	enter
*EXIT	F3	exit program
*REFRESH	F5	refresh screen
*CANCEL	F12	cancel
*MOREKEYS	F24	more keys

12.3.15 Pin-Columns (Dialog), *PEEK50

Programmfunktion	Std.Blg.	Bemerkung
*NONE	' '	no action
*ENTER	ENTER	enter
*SAVE_EXIT	F3	Save & exit program
*REFRESH	F5	refresh screen
*CANCEL	F12	cancel
*SEARCH	F16	search
*TOP	F17	goto top of file
*BOT	F18	goto bottom of file
*CLRALL	F22	clear all options
*MOREKEYS	F24	more keys
*PAGEUP	PgUp	scroll up (can not be changed by the user!)
*PAGEDOWN	PgDn	scroll down (can not be changed by the user!)
*EXIT	-/-	exit program

12.3.16 Create Program, *PEEK52

Function	Default	Description
*ENTER	ENTER	enter
*EXIT	F3	exit program
*REFRESH	F5	refresh screen
*CANCEL	F12	cancel
*MOREKEYS	F24	more keys

12.3.17 Select Environment, *PEEK56

Function	Default	Description
*NONE	' '	no action
*ENTER	ENTER	enter
*EXIT	F3	exit program
*REFRESH	F5	refresh screen
*CANCEL	F12	cancel
*SEARCH	F16	search
*TOP	F17	goto top of file
*BOT	F18	goto bottom of file
*MOREOPT	F23	more options
*MOREKEYS	F24	more keys
*PAGEUP	PgUp	scroll up (can not be changed by the user!)
*PAGEDOWN	PgDn	scroll down (can not be changed by the user!)
*SLCENV	1	select environment to load/save/delete (file & layout)
*SLCLAYOUT	2	select layout to load

12.3.18 Delete Environment, *PEEK57

Function	Default	Description
*EXIT	F3	exit program
*DELETE	F9	delete environment (confirmation)
*CANCEL	F12	cancel
*MOREKEYS	F24	more keys

12.3.19 Message box, *PEEK59

Function	Default	Description
*ENTER	OK	OK button
*F03	NO	NO button
*F09	YES	YES button
*F12	CANCEL	CANCEL button

12.3.20 Text-Editor, *PEEK64

Function	Default	Description
*ENTER	ENTER	enter
*EXIT	F3	exit program
*REFRESH	F5	refresh screen

*CANCEL	F12	cancel
*MOREKEYS	F24	more keys

12.3.21 Prompt: Select Subfile Option, *PEEK68

Programmfunktion	Std.Blg.	Bemerkung
*NONE	' '	no action
*ENTER	ENTER	enter
*EXIT	F3	exit program
*REFRESH	F5	refresh screen
*CANCEL	F12	cancel
*TOP	F17	goto top of file
*BOT	F18	goto botton of file
*MOREOPT	F23	more options
*MOREKEYS	F24	more keys
*PAGEUP	PgUp	scroll up (can not be changed by the user!)
*PAGEDOWN	PgDn	scroll down (can not be changed by the user!)
*SLCENV	1	select option

12.3.22 Prompt: Select File, *PEEK69

Function	Default	Description
*NONE	' '	no action
*ENTER	ENTER	enter
*EXIT	F3	exit program
*REFRESH	F5	refresh screen
*CANCEL	F12	cancel
*SEARCH	F16	search
*TOP	F17	goto top of file
*BOT	F18	goto botton of file
*MOREOPT	F23	more options
*MOREKEYS	F24	more keys
*PAGEUP	PgUp	scroll up (can not be changed by the user!)
*PAGEDOWN	PgDn	scroll down (can not be changed by the user!)
*SELECT	1	select subfile record

12.3.23 Update Programs, *Pxxxxxxxxx

Function	Default	Description
*ENTER	ENTER	enter
*EXIT	F3	exit program
*REFRESH	F5	refresh screen
*TGLLCASE	F6	toggle upper/lower case mode
*HEADLINE	F7	toggle headline
*TGLNULL	F8	toggle null indicator
*HEXEDIT	F9	hex-editor
*STREDIT	F10	text-editor
*CANCEL	F12	cancel
*TGLRCDLCK	F13	toggle record lock
*TOP	F17	goto top of file
*BOT	F18	goto bottom of file
*MOREKEYS	F24	more keys
*PAGEUP	PgUp	scroll up
*PAGEDOWN	PgDn	scroll down
*LOWERCASE	-/-	lower case mode
*UPPERCASE	-/-	upper case mode

12.3.24 Peek/400 Control Keys, *PGM

The user settings files holds a lot of parameters that allow you to customize **Peek/400** to meet your requirements. This chapter describes the values in section *PGM of the user settings file.

Every end of a record in this section must be marked with a ">" (x'8B').

12.3.24.1 *ACCESSKEY (SET0003)

Representation of the key of a file in the main screen of Peek/400			
Position	Data type	Parameter	Description/Special Values
1	1A	Minus sign (-)	Sign to indicate a negative value
2	1A	Plus sign (+)	Sign to indicate a positive value
3	1A	Decimal point (,)	Sign to represent the decimal point
4	1A (bool)	Show minus/plus sign	1=Yes; 0=No
5	1A	Delimiter (;)	Sign that is been placed between the fields of the key

12.3.24.2 *CVTCHR (SET0006)

Replacement character for characters below x'40' and equal x'FF'			
Position	Data type	Parameter	Description/Special Values
1	1A	Replacement character (÷)	Character that will be shown if there are non-displayable characters in the records (below x'40' and equal x'FF')

12.3.24.3 *CRTPGM (SET0012)

Defaults for the program generator			
Position	Data type	Parameter	Description/Special Values
1	1A (bool)	Allowed to use lower case characters	1=Yes; 0=No
2	1A (bool)	Default is lower case	1=Yes; 0=No

3	1A (bool)	Lock record on read	1=Yes; 0=No
---	-----------	---------------------	-------------

12.3.24.4 *DSPATR (SET0001)

Settings for the representation of the subfile (main screen)			
Position	Data type	Parameter	Description/Special Values
1	1A	Screen mode 80/132 characters	1=80-characters; 0=132-characters
2	1A	Colour: normal colour	Hexadecimal colour attribute
3	1A	Colour: marked columns	Hexadecimal colour attribute
4	1A	Colour: pinned rows/columns	Hexadecimal colour attribute
5	1A	Colour: Headline	Hexadecimal colour attribute
6	1A	Colour: record found (search engine)	Hexadecimal colour attribute
7	1A	Colour: underlined (search engine)	Hexadecimal colour attribute
8	1A	Colour: reverse (search engine)	Hexadecimal colour attribute
9-18	10A	Type of headline	*FIELDNAME/*FIELDTEXT/*FIELDTYPE
19	1A	Colour: alternating line colour	Hexadecimal colour attribute
20	1A	Use alternating line colours	1=Yes; 0=No
21	1A	Use editcode with sign instead of original editcode	1=Yes; 0=No
22	1A	Colour: key fields	Hexadecimal colour attribute
23-32	10A	Aktive screen mode	*DSPNRM normal *DSPHEX hexadecimal
33	1A	Display exceptions with column width	1=Yes; 0=No
34	1A	Colour: exceptions column width	Hexadecimal colour attribute

12.3.24.5 *DFTDSPMDE (SET0011)

Default display mode

Position	Data type	Parameter	Description/Special Values
1-10	10A	Default screen mode	*DSPNRM normal *DSPHEX hexadecimal

12.3.24.6 *ENVFILE (SET0015)

File to save environments			
Position	Data type	Parameter	Description/Special Values
1-10	10A	File	*NONE Keine Datei
11-20	10A	Library	*NONE keine Bibliothek *PRDLIB Peek/400 Prod.Bibl.
21	1A (bool)	Allowed to change the file	1=Yes; 0=No
22	1A (bool)	Function activated	1=Yes; 0=No

12.3.24.7 *FLOATKEYS (SET0009)

Automatically float key fields to top			
Position	Data type	Parameter	Description/Special Values
1	1A (bool)	Float keys to top	1=Yes; 0=No

12.3.24.8 *LANGUAGE (SET0004)

Current user language			
Position	Data type	Parameter	Description/Special Values
1-3	3A	Language	GER German ENG English

12.3.24.9 *PROMPT (SET0008)

Prompt function			
Position	Data type	Parameter	Description/Special Values
1	1A	Character to invoke prompt function	Every character possible
2	1A (bool)	Display prompt fields with an other colour	1=Yes; 0=No

12.3.24.10 *PRVFILE (SET0014)

Last specified file at Peek/400 command			
Position	Data type	Parameter	Description/Special Values
1-10	10A	File	
11-20	10A	Library	
21-30	10A	Member	

12.3.24.11 *SCROLL (SET0010)

Settings for horizontal field scroll mode			
Position	Data type	Parameter	Description/Special Values
1-10	10A	Horizontal field scroll mode	*BOTH both directions *LEFT left only *RIGHT right only *NONE do not scroll

12.3.24.12 *SEARCH (SET0002)

Settings for search engine			
Position	Data type	Parameter	Description/Special Values
1	1A	Wildcard (%)	Every character possible
2-6	5S 0	Number of records to search sequentially (10000)	

12.3.24.13 *SECATRDFT (SET0013)

Default security attributes (may be overridden at command level or by EXIT01)			
Position	Data type	Parameter	Description/Special Values
1	1A (bool)	Allowed to change the library (main screen of Peek/400)	1=Yes; 0=No
2	1A (bool)	Allowed to change the file (main screen of Peek/400)	1=Yes; 0=No
3	1A (bool)	Allowed to change the member (main screen of Peek/400)	1=Yes; 0=No
4	1A (bool)	Allowed to add/change/delete records (main screen of Peek/400)	1=Yes; 0=No
5	1A (bool)	Allowed to open a file Peek/400	1=Yes; 0=No

12.3.24.14 *SPLASH (SET0005)

Mode of splash screen			
Position	Data type	Parameter	Description/Special Values
1	1A (bool)	Display splash screen at start	1=Yes; 0=No

12.3.24.15 *VERSION (SET0007)

Version number			
Position	Data type	Parameter	Description/Special Values
1-2	2A	Version	
3-4	2A	Release	
5-6	2A	Modification	

13 Tips & Tricks

13.1 Peek/400 and end-user!?

„Never!“ – That will cause big trouble!

Keep calm and make use of the possibilities of **Peek/400**. Of course you can enable an end-user to work with **Peek/400** but you may prevent him from:

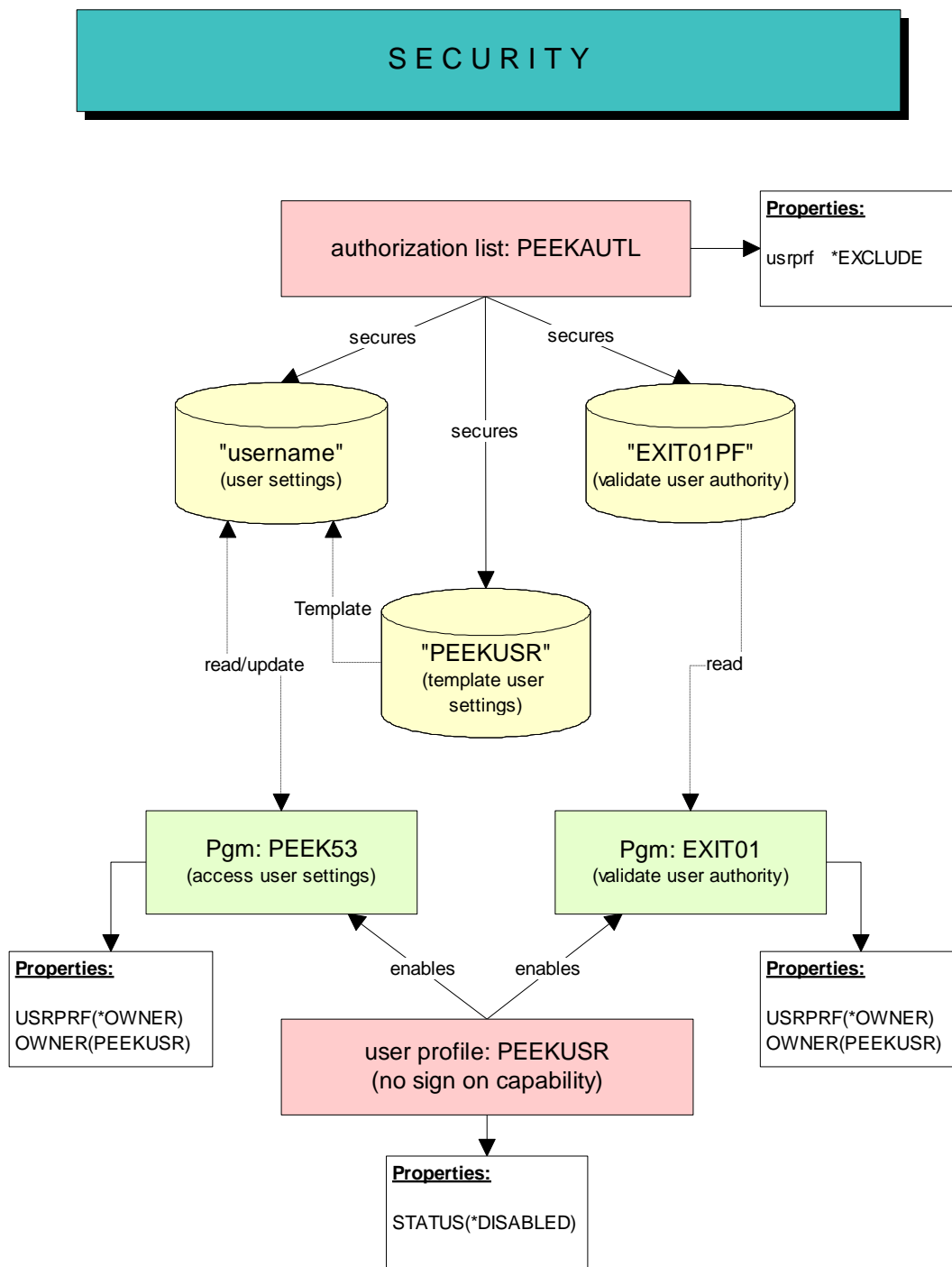
- changing records
- copying records
- deleting records

Just open his configuration file and delete the following entries:

Function	Default	Description
*ADD	F6	add record
*CHANGE	2	change record
*COPY	3	copy record
*COPYEXT	9	copy record to another file
*DELETE	4	delete record
*CMDLINE	F21	command line

Now you have to ensure that your users do get the rights back by semself, for example with UPDDTA.

You may implement the following concept of security to achieve this goal:



(Screen: Security **Peek/400**)

First you have to create an authorization list named „PEEKAUTL“ which is been used to secure that objects that are responsible for security. These objects are:

- all files with user settings
- PEEKUSR as the template file for the user settings

- all exit programs

All user that should not have access to that objects must be added to the authorization list with authority *EXCLUDE. Obviously these users should not have *ALLOBJ authority in their user profiles.

In order to allow **Peek/400** to access and modify these objects you can create a user profile named "PEEKUSR" with authority to access and modify the objects.

Last but not least you have to change the owner of all exit programs and of PEEK53 to „PEEKUSR“ and you must set the parameter USRPRF to *OWNER.

Now all security relevant objects just can be accessed and modified by the exit programs and by PEEK53 but not by your users.

That's all!

13.2 Create Your Own Default Keyboard Mapping

Do you like to have your own default keyboard mapping of **Peek/400**?

Just open the file PEEKUSR placed in the program library of **Peek/400** and change the entries.

PEEKUSR is the default configuration file for every new user of **Peek/400**.

13.3 Your Own Language for Peek/400

Create your own language definition file for **Peek/400**.

To do so you have to create a copy of the German or English language definition file and to translate the entries there.

Try the following way to create a Swedish language definition file:

CRTDUPOBJ	OBJ(PEEKENG)
	FROMLIB(PEEK)
	OBJTYPE(*MSGF)
	TOLIB(*FROMLIB)
	NEWOBJ(PEEKSVE)

Translate the entries:

WRKMSGD	MSGID(*FIRST)
	MSGF(PEEK/PEEKSVE)

Ready!

Of course I appreciate any new language definition file!

Start **Peek/400** with the new language:

```
PEEK          FILE(FileName)
              LANGUAGE(SVE)
```

14 EXIT-Programs

14.1 User's Authority (EXIT01)

Since the exit program EXIT01 is been executed before any new file is been opened by **Peek/400** you can verify if a particular user is allowed to open the file and if he is allowed to change records or to change the file, the library over the member in order to select another file or member.

The source code of EXIT01 has been shipped in source file QEXAMPLE and can be modified to meet your own requirements.

EXIT01 uses file EXIT01PF to verify a user's authority.

Further information about EXIT01 can be found in the source code. Unfortunately it is just available in German.

15 Help me!

Please let me know if you think that there is something missing! A good piece of software can not be produced by a lonely programmer hacking on his keyboard!

16 History

Datum	Beschreibung
29.09.1997	Start development of Peek/400
07.11.1997	Finished Version 1.0, Beta 1
11.11.1997	Added option to switch between the input of uppercase letters and lowercase letters when changing alphanumeric fields.
13.11.1997	Added dialog for entering the license key. Added SPLASH-screen
26.11.1997	Display of non-displayable characters in the subfile and in the frame via special character.
27.11.1997	Editing of record with non-displayable characters. Fields with non-displayable characters are hidden so that they cannot be edited.
29.11.1997	Release of Version 1.0
04.12.1997	Cannot access files in the QTEMP library. Correction of the command definition of the PEEK command. Error in the process of deleting locked records. Intercepted setlocks during the erasing process.
16.12.1997	Function "Move whole page to the left" built in. Program function: *PAGELEFT Function "Move whole page to the right" built-in. Program function: *PAGERIGHT
17.12.1997	Fixed bug in the "SEARCH" function for "LIKE/NLIKE" in connection with "non-case-sensitive search".
18.12.1997	Repeat function for subfile selections built in. Program function: *REPEAT
19.12.1997	Built-in automatic matching of user definition files when changing versions. Editcodes without prefix (1, 2, 3, 4, Z) are converted to the corresponding prefixed editcodes. Built-in function for program re-creation. Program function: *REBUILD Function to delete all pinned lines built in. Program function: *CLRPINROW Function to delete all pinned columns built in. Program function: *CLRPINCOL
30.12.1997	Built-in function to change the layout.

	Program function: *LAYOUT
26.01.1998	Color highlighting of key fields in the heading line
29.01.1998	Enables entering negative values and values with decimal places within the search function.
16.02.1998	Processing time, date and timestamp fields in the file key. Error checking when entering the override key for these field types.
27.02.1998	Displaying files that cannot be updated, e.g.: <ul style="list-style-type: none"> • JOIN-Files • File with referencial integrity but without journaling.
06.03.1998	Correction of an error in the generation function in relation to foreign code pages
15.03.1998	Release of Version 1.1
18.03.1998	Intercepted program abort after *REBUILD
21/22.03.1998	Display of database relationships
04.04.1998	Fixed an error when creating the update program.
14.04.1998	In some cases the PEEKFLD file could not be found.
21.04.1998	Function of shortcuts built-in.
	Fixed a bug with the function *REFRESH in PEEK14. (Show, Ext. Copy, Delete)
	*BOT and *TOP built into *PXXXXXXXXX programs
28.04.1998	Fixed an error when converting non-presentable characters in the keyword
27.05.1998	Renunciation of the OUTFILE when determining the key field information, now via API
28.05.1998	Created command TREE
01.06.1998	Release of Version 1.2
18.07.1998	Fixed error in the display of Editcode X. Now treated as Editcode Z.
	Fixed F11 in 80 character mode. F11 was not active in the display file.
17.08.1998	Hex-Editor on field level in selection 2 (Change record) built-in.
27.09.1998	Error generating the REFFLD line in the screen file.
06.10.1998	Error in the Hex-Editor. Field changes in the "Change Record" screen were not applied to the Hex-Editor.
08.10.1998	Error re-sorting the fields in the "Layout" function. The "Editcode" screen field was not initialized correctly.

11.10.1998	Release of Version 1.3
11.12.1998	Rename external file fields to internal field names in generated programs
14.12.1998	F4 function for list of partial files
15.12.1998	Correction of text display "with commit control"/"without commit control" in the generated programs
21.12.1998	Display the number of partial files in the main screen
19.01.1998	Hex display via F9 with the function "DISPLAY RECORD"
02.02.1999	Release of Version 1.4
10.02.1999	Improved support for date and time fields in the generated programs
11.02.1999	In the event of an error in the generated programs (for example, "Double Key"), the screen field contents are no longer overwritten with the file field contents.
	From now on, a new function "*PINCOLDLG" is available in the main screen (F15). Behind this function is a subfile dialog that makes it possible to pin fields (columns) by simple selection (enter sequence number).
	The former function of F15 (*USERSETG) has been moved to the subfile selection "ST",
12.02.1999	Display "About Peek/400" installed. Program function: "A"
	The processing priority of screen input in the main screen has been changed. Data sharing with changes in the header of the screen (for example, changing the file) are processed before subfile input.
	The *TOP and *BOT functions are now available in the display screen for the individual sentences.
	The *TOP and *BOT functions are now available in the screen for selecting a field from the record (operator guide).
	The *TOP and *BOT functions are now available in the layout display screen.
	In the generated programs, as well as in the screen for displaying a single set, the keystrokes are marked with a ">".
16.02.1999	In the "External Copy" screen, the "File, Library and Partial File" fields are no longer deleted unless the opened file has changed.
17.02.1999	The values for "Replace records" and "Create file" are reset to the default values of "**ADD" and "**NO".
06.03.1999	Release of Version 1.5
10.03.1999	Fixed problems with positioning subfiles when entering subkeys in date, time and timestamp fields.

16.03.1999	Selection of data sets via SQL. Program function: *SQL
18.03.1999	Fixed display of key fields in generated programs.
19.03.1999	Default information for the program generator built-in.
23.03.1999	Display and selection database relationships built into SQL Selection to select a key.
02.04.1999	Release of Version 2.0
27.04.1999	Sharing/protecting the "File", "Library" and "Share File" fields via startup parameters (ALWCHGLIB, ALWCHGFILE, ALWCHGMBR)
28.04.1999	Restricting the editing mode via startup parameters (UPDMOD(*YES/*NO)
	Check user profile for parameter LMTCPB for action *CMDLINE
30.04.1999	Bugfix for the generation data CASE and ALWLC. The corresponding values were interpreted incorrectly.
05.04.1999	Special value *PRV in the PEEK command for KEYWORD FILE.
06.05.1999	Displays the physical file in the database relations if no logical files exist.
	Keep the pinned rows and columns when switching the sort order.
08.06.1999	Release of Version 2.1
24.06.1999	When reducing the column width using the *LAYOUT function, numeric values are now displayed right-adjusted.
24.06.1999	Release of Version 2.1.1
21.07.1999	Extension: Create service program for general functions. (Preparing for processing variable length fields.)
22.07.1999	Extension: Added support for variable length fields.
22.07.1999	Bugfix: Synchronization of the display between update and display program.
23.07.1999	Bugfix: Executing shortcuts. Passing ShortCmd to PEEK42 Parameter length too short defined
29.07.1999	Extension: Hex editor: move right/left with F19/F20 (PEEK45).
06.08.1999	Extension: PEEK59, generic window for message retrieval (msgbox) created.
11.07.2000	Bugfix: Update the fields "File", "Library" and "Member" when pressing the F5 key (PEEK05).
18.07.2000	Bugfix: Deleting the fields: Attachment key and relative record number when changing the file. (PEEK05).
19.07.2000	Extension: F17/F18 (begin/end) built into Hex editor. (PEEK45).
26.07.2000	Bugfix: Part file list at function SE was incomplete. (PEEK56).

06.12.2000	Extension:ALWCHGRCD(*NOKEY) built in
14.12.2000	Bugfix: If a file could be opened for input only, then the following functions caused an error: - Pin Record - Copy record to external file - Change sort sequence
25.02.2001	Extension: Improved support for record format selection for logical files. Now only records of the respective record format are displayed.
11.03.2001	PEEK12 has been adapted to use Msg variables.
09.04.2001	Bugfix: Record lock for pinned records removed. Access via FILE00 to FILE04 changed in PEEK05.PBPinRcd
09.04.2001	Bugfix: Case-sensitive search function; PEEK17 fixed.
09.04.2001	Extension: Preassignment of the TOMBR() parameter in the program PEEK26 with the name of the "of partial file".
09.04.2001	Extension: Display of records of multi-member files. (PEEK14)
26.04.2002	Bugfix: Environments. PEEK54/PEEK55 Saving/loading pin tables in the environment file fixed.
26.04.2002	Bugfix: Setup. PEEK05 Deleting the file PEEKFLD when a file is closed.
26.04.2002	Extension: Environments. PEEK54/PEEK55 Save the opened file. Choice between *ENVIRONMENT or *LAYOUT_ONLY built-in.
27.04.2002	Bugfix: Hex-Editor. For fields > 512 bytes only the first 512 bytes were written back into the record.
29.04.2002	Change/Bugfix: Environments. PEEK54/PEEK55 Save environment data independently. Change of environment file library (PEEKENV) was not detected correctly.
04.05.2002	Release of Version 2.2
23.05.2002	Fixed bug in handling 2-byte binary values.
20.10.2003	Allowed data types J, O, E.
20.10.2003	Release of Version 2.2.1 (internes, nicht veröffentlichtes Release)
11.02.2004	Fixed generation error for files with "input only" fields.
23.03.2004	Built-in support for 1-byte and 8-byte integer fields.
01.04.2004	Corrected error in PEEK05 with *HIVAL and *LOVAL values in date, time and timestamp fields.
01.04.2004	Built-in support for time formats *HMS and *EUR, as well as date format *EUR.
28.04.2004	Corrected break of PEEK05 for record lengths > 4096 characters.

28.04.2004	Built-in support for record lengths up to 32766 bytes.
	Release of Version 2.2.2
	New substitute variable % + field name for shortcuts
	Changing the licensing to freeware.
21.09.2004	Release of Version 2.3.0
	Fixed error in function f_basedPF().
	Fixed an error when opening a SQL selection.
	Output error message when pinning a set if the logical file is based on multiple physical subfiles.
	Ignore empty subfile selections.
09.02.2006	Release of Version 2.3.1 (internes, nicht veröffentlichtes Release)
	Fixed problem when generating display files.
09.02.2006	Release of Version 2.3.2
	Install progress bars when creating update programs.
	Corrected error message with incorrect input Yes/No.
	Generate Display File with Edit Code 'P', if a numeric field has no Edit Code.
	Field length DATA in PEEKUSR increased to 256 characters.
	"Index out of range" error in PEEK15 corrected.
	Release of Version 2.4.1 (internes, nicht veröffentlichtes Release)
	Added support for 310 and 2010 fields.
	Improved positioning of the cursor after field selection (F4) in SQL selection.
	Fixed program crash when entering 0 in "Field-Number": in program PEEK05.
	Generated programs: Adjusted length of "ShortCmd".
	Release of Version 2.4.2 (internes, nicht veröffentlichtes Release)
	Corrected error when moving the display to the right with too long fields and pinned columns.
07.05.2008	Release of Version 3.0.0
	Store generated sources in QPEEKGEN instead of QCOPYLE and QRPGL.
	Built-in support for NULL-capable fields.

	Improved hex editor.
	Status message setting was not restored in case of conversion error in the RPG module.
	New text editor for fields up to 1024 bytes.
	Determination of the settings file based on the group profile in program EXIT02 disabled.
	Maintain mode for input in lowercase/capital letters of the generated programs built in.
	Generated programs: New selection: "Read locked sentence".
	Generated programs: Changing the sentence lock.
	Umschalten Eingabe der Schlüsselfelder in PEEK05 in Kleinbuchstaben mit Auswahl „K“.
	Save/ Load mode of key fields (PEEK05) in the working environment.
	Error loading the desktop environment, parameter ENVFILE() of the PEEK command fixed.
	Generated programs: Query "Save anyway" when the record is changed by another job.
12.08.2008	Release of Version 3.1.1
	Template for update programs regarding sentence lock revised.
	Built-in "Print record" with selection "6" or function key F21 (in the display program).
	Expanded shortcuts so that the data format of the passed parameters can be specified.
	Window to display and select the available subfile options in the main program PEEK05.
15.08.2008	Release of Version 3.1.2
	Fixed error when using SQL selection.
	Improved output of error messages during SQL selection
22.08.2008	Release of Version 3.1.3
	Fixed another error when SQL selection is used.
04.09.2008	Release of Version 3.1.4
	Fixed field overflow in field \$\$Digt in program PEEK34 (Layout).
18.08.2009	Release of Version 3.1.6
	The SETGT and SETLL functions have been reworked. Fixed a bug that caused positioning at the end of the file when pressing F5 at the beginning of the file and then deleting the first record between SETLL and READ.
	Fixed a bug in processing the shortcuts. The underline was not in the list of valid characters for field names.

	Execute automatically from C_Enter in PEEK34 at F3 (SAVE).
	Preassignment for JIS date and time field built in.
27.10.2009	Release of Version 3.2.1
	Changed the selection of the edit code for displaying numeric data in the subfile.
	Generate internal key corrected for cases where the key is longer than the available input line.
27.10.2009	Release of Version 3.2.3
	Fixed an error when updating the subfile with F5. The subfile was placed at the end when the first record was deleted from another job in the meantime.
	Fixed a bug in processing the shortcuts. The underline was not in the list of valid characters for field names.
	Layout Editor (PEEK34): Automatically execute C_Enter on SAVE (F3).
	Record display (PEEK16) and generated update programs: Preallocation for JIS date and time fields built in.
	Built-in support for data type FLOAT.
	Default editcode for processing numeric data changed to "L". Setting via „PEEKUSR“: *DSPATTR, Position 21 (field SET_DspSgn): 0 = Do not change Edit Code 1 = Old behavior, 0=blanks 2 = New behavior, use the Edit Code defined at position 33 *DSPATTR, Position 33 (field SET_editCode): Edit Code used, when SET_DspSgn equals 2.
	Fixed an error when generating the internal overlay key if it is longer than the input line.
	Changed order when opening files hFile00 – hFile03 to avoid problems with files with SHARE(*YES).
	Release of Version 3.2.4 (internes, nicht veröffentlichtes Release)
	Generic file selection at the command prompt.
	Fixed bug in PEEK63.CIO_setllWithRRN().
	Fixed bug in PEEK58.f_basedMbr(). Join files were not detected correctly.
	F4 for file selection in the record display (PEEK05).
	New: EXIT03 to determine the edit codes in the generated update programs.
	Sort the entries by name in the overview of logical files.
	Display of all key fields in the overview of logical files.

	Release of Version 3.2.5 (internes, nicht veröffentlichtes Release)
	Generic file selection in the Peek/400 main screen.
	Fixed bug in the DDS generator with alternative field names longer than 30 characters.
	Release of Version 3.2.6 (internes, nicht veröffentlichtes Release)
	Spanish translation by Antón Vigo.
	Extension of the PEEK and TREE commands by parameters WHERE and ORDERBY.
	Correct display of the number of selected records with access type *SQL.
	New command PEEKINIT to create the commands PEEK and TREE in the desired language (GER, ENG, SPA)
05.11.2010	Release of Version 3.3.0
	PEEK63 recreated to include the modified function value of the prototype of the function C_RIsIck in PEEK63C.
28.05.2011	Release of Version 3.3.1
	Parameter SETTINGS added.
	EXIT02 extended.
	Determining the user settings to be used has been revised.
28.06.2011	Release of Version 3.3.2
	Corrected preparation of the internal key for VARYING fields.
	Corrected error when deleting records from a logical file if the logical file's record format is named differently from the physical file's record format.
	From now on, the working environment entered at the command prompt is not only used for loading the first environment, but is maintained for the entire program runtime.
	New parameter ENVSAVE to control whether the work environment should be saved automatically when exiting the program.
	Display of GRAPHIC fields that have a CCSID and are used to store DBCS data.
	Italian translation by Marco Alberici.
04.08.2012	Release of Version 3.4.1
	Bugfix when displaying the hex data (F9) starting from the record display (PEEK14).
	New column header (F7), consisting of the field name and data type.
10.08.2012	Release of Version 3.4.3

	Bugfix PEK04: Missing call for event *DELETE built in.
	Bugfix PEEK05/PEEK14: Disabled automatic character conversion depending on the job CSID when reading the data. Now converted manually.
	Bugfix PEEK05: Fixed display of the record format ID.
	Bugfix PEEK06: Delaying old display values fixed.
	Bugfix PEEK06: Calculation of display length for GRAPHIC fields fixed.
	Bugfix PEEK06: Fixing the headings regarding the CCSID.
	Bugfix PEEK15: Fixed overwriting of alias names.
	Bugfix PEEK15: Error in the hex editor for field types A and G.
	(Field length 0 is passed to PEEK45.)
	Bugfix PEEK18: RNX1000 in procedure cvtToJobCcsid().
	New: EXIT05 to filter and change command keys and subfile selections.
	New: parameter "Load layout only" (ENVLAYOUT).
27.08.2015	Release of Version 3.5.0
	Fixed incorrect processing of record fields in PEEK14 for logical files with different record structure to the physical file.
19.12.2015	Release of Version 3.5.1 (internes Release)
	Fixed infinite loop due to an incorrect return value in case of an IO error in the CIO_readp() function.
	Command TREE: "Pointer not set" bug fixed.
04.04.2015	Release of Version 3.5.2
	Fixed a problem with changing the record format (Pmt_Fmt).
	Program function *OK due to incorrectly delivered PEEKUSR equated to *ENTER. Likewise *NO for *EXIT.
	Italian translation revised by Marco Riva.
06.03.2017	Release of Version 3.5.3
	Fixed an error when creating a new file for the user settings, so that the file now also contains the expected records.
10.04.2019	Release of Version 3.5.4
	Fixed problem when copying default values from PEEKUSR.

	File PEEKUSR not opened correctly.
09.03.2021	Release of Version 3.5.5
	Fixed problems when displaying records from logical files with multiple record formats.
	Now Float special values 'NaN' and 'Inf' are displayed.
	Fixed RNQ0100 (Length or start position is out of range) due to an odd number of single quotes in the field description.
	Fixed error message RNQ0100 (Length or start position is out of range).
	Disallowed zoned and packed fields with more than 30 digits.
	Fixed problem of monitoring errors in CIO_read() and CIO_readp(). (Happend with logical files with multiple record formats.)
11.08.2022	Release of Version 3.5.6
	Fixed RNQ0103 (The target for a numeric operation is too small to hold the result) in PEEK05 when loading values to \$\$RECORDS.
13.06.2023	Release of Version 3.5.7
	Fixed problem with invalid special characters when overwriting alias name (keyword: ALIAS).
20.11.2023	Release of Version 4.0.1
	Fixed problem that fields larger than 1024 characters may lose data when using the text editor.
	Added options "Insert" (F7) and "Delete" (F8) to the text editor.
	Expanded the size of the start position field in the hex editor from 4 to 5.
	Fields of data type "Graphic" are now supported in the text editor.
	Source code fully converted to **free.
07.12.2023	Release of Version 4.0.2
	Fixed incorrect double quotation marks in the editor for the SQL ORDER BY clause.
	Translated previous history items with online translator to English.
15.01.2024	Release of Version 4.0.3
	Fixed incorrect data types of field for SQL Order By and SQL Where.
02.02.2024	Release of Version 4.0.4
	Fixed RNQ0100 (Length or start position is out of range for the string operation) in PEEK03.

27.02.2024	Release of Version 4.0.5
	Added support for new SQL data type 'Boolean'.
11.04.2024	Release of Version 4.0.6
	Changed RRN from INTEGER to UNSIGNED INTEGER to fix error MCH1210 (Receiver value too small to hold result.).
04.10.2024	Release of Version 4.0.7
	Fixed PEEK02 to properly return the record format ID.
	Fixed PEEK55 to properly load the layout on applying environment settings.